

A composite image featuring Ben Stokes. On the left, he is in his white England cricket kit, wearing a helmet and pads, with his arms raised in celebration. On the right, a close-up of his face shows him smiling broadly, holding a GM-branded cricket bat over his shoulder. The background is a blurred crowd of spectators.

GM[®]

MADE BY

England's Best

Ben Stokes - World Cup Winner 2019 -
14th July 2019

BOOK OF CRICKET

2020

Ben Stokes - The Miracle of Headingley -
25th August 2019



MADE BY

England's Best

This GM Book of Cricket is designed to assist our trade customers around the World with their purchasing decisions. For more detailed information, see our website at:

www.gm-cricket.com

7 REASONS WHY GM?

You should stock GM because:

1. All GM English Willow DXM bats in this Book of Cricket are designed and produced by our own craftsmen and women in our own factory in Nottingham, England
2. The GM factory is the most technologically advanced in the World
3. Only GM blend state of the art DXM technology with over 130 years of craft experience
4. We have direct and absolute control over every aspect of the bat manufacturing process
5. GM Bats lead the industry with continuous improvement through Research & Development. GM 2020 bats are our most advanced yet
6. GM make more bats in England than all other bat brands put together
7. All GM 2020 DXM bats feature our superlative livery, showing more of the blade. We are very proud of our Made In England manufacture and have Nothing To Hide!

No wonder that GM DXM bats are regarded by all as The Best Bats In The World. Pick up a GM DXM bat and feel the electricity flow!

Ask other brands where "their" bats are made and by whom? Ask us, and we will tell you about Kevin, Brian, Robert, Dave, Adrian, Mark, Janice and the whole team. Better still, come and visit the factory in Nottingham and see GM British Manufacturing Excellence leading the World for yourself!

BEN STOKES |

WORLD CUP WINNER AND ENGLAND SUPERHERO



All of us here at GM have been captivated by Ben's performances for England throughout 2019, as has the entire nation!

We're delighted to work with Ben and look forward to watching his and England's continued success on the field with his DIAMOND in hand!



MADE BY
England's Best

BAT INFORMATION

WEIGHT COMPARISON CHART (PLEASE NOTE)

- + All Adult bats except 303, will be supplied: ToeTek Now finish/Short handle/Right handed
- + Long handle, limited to adult sizes, please refer to the pricelist or website for available options

BAT WEIGHT	2LB	1	2	3	4	5	6	7	8	9	10	11	12	13	14	15	3LB
ZELOS L555									ORIGINAL LE / ORIGINAL								
									808								
ICON L555							ORIGINAL LE / ORIGINAL										
							909 / 808										
SIREN L540								ORIGINAL LE / ORIGINAL									
								909 / 808									
NOIR L555								ORIGINAL LE / ORIGINAL									
								909 / 808									

TYPICAL WEIGHT COMPARISON FULL SIZE AND ACADEMY BATS

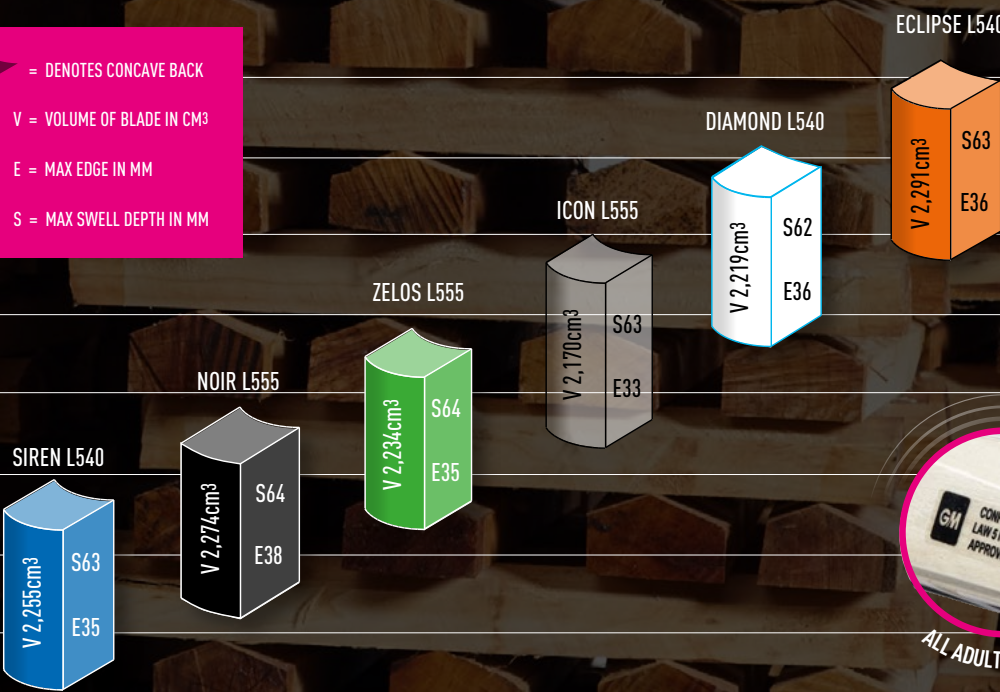
This chart is an indicative guide to the weight distribution of full size short handle bats, **including GM NOW!, ToeTek and a single grip**. We endeavour to supply all orders in a balanced range across these weights.

BAT WEIGHT	2LB	1	2	3	4	5	6	7	8	9	10	11	12	13	14	15	3LB
ECLIPSE L540									ORIGINAL LE / ORIGINAL								
									909 / 808								
DIAMOND L540									ORIGINAL LE / ORIGINAL								
									909 / 808								
NOIR SMALL							ORIGINAL										
							808										
ICON L555 ACADEMY				ORIGINAL LE													
				808													

GM 2020 BAT SPECTRUM

HIGHER
↑
SWEET SPOT POSITION
↓
LOWER

- ◆ = DENOTES CONCAVE BACK
- V = VOLUME OF BLADE IN CM³
- E = MAX EDGE IN MM
- S = MAX SWELL DEPTH IN MM



GM 2020 BAT RANGE

Figures relate to a Full Size blade and are for guidance and comparison only

FULL SIZE BAT SHAPE CHARACTERISTICS

	SWELL DEPTH	SWELL POSITION			BOW		EDGES mm		BACK PROFILE CONCAVITY		
	BIG	MEDIUM	HIGH	MIDDLE	LOW	DISTINCT	SUBTLE	VERY BIG	BIG	MEDIUM	PRONOUNCED
ICON L555		63							33		
SIREN L540		63							35		
ECLIPSE L540		63							36		
ZELOS L555	64								35		
NOIR L555	64							38			
DIAMOND L540		62							36		

BAT WEIGHTS: IMPORTANT INFORMATION

Bat weight and performance is dependent on the particular cleft of English Willow that it is made from. No two clefts are the same even from the same tree.

Heavier willow - less prone to damage, inherently more powerful.

Lighter willow - more manoeuvrable, faster bat speed.

ALWAYS SELECT A BAT BASED ON ITS PICK UP, HOW IT FEELS TO YOU, NOT ON ITS SCALE WEIGHT.

NAKED WEIGHT!

Your bat, when born in Gunn & Moore's Nottingham, England factory weighs about **30z less** than its retail weight when fitted with **GM NOW!, ToeTek, labels and a single grip.**



BAT SIZES EXPLAINED



GM BLADE LENGTHS

GM 2020 Adult bats feature two different blade lengths – L540/555. Each blade shape is optimised for a specific blade length. As blade length decreases, handle length increases so that the overall length of the bat remains constant.

Shorter blades allow for faster hands through the ball, more dynamic sweet spots, larger swells, supreme balance and explosive power.



TO GIVE YOUR BEST YOU NEED THE RIGHT EQUIPMENT.

GM manufacture two bespoke sizes of bat - ACADEMY for taller youths and a bespoke SMALL ADULT size. Both sizes are designed from the outset for their specific players, custom tuned for pick-up and power.

	Small	Academy
Blade width	108mm	104mm
Blade length	540mm	555mm
Handle length	280mm	280mm

GM BAT CARE

FACTORY FITTED PROTECTION



GM NOW!

- + “Knocked-in” by the batmaker in-house
- + Raw linseed oil applied to reduce cracking and splitting by maintaining the moisture level of the blade
- + Clear anti-scuff cover applied to the face and edges to increase blade durability



TOETEK™

- + DriGuard applied to resist damp and minimise toe swelling
- + Specially shaped resilient shield fitted to toe of bat
- + Reduces toe damage and feathering that is often caused by tapping at the crease
- + Further barrier to damp

REPAIR SERVICE

- + Rehandling
- + Refurbishment (sand and polish, new grip, new stickers)
- + General repairs

CONTACT

Customer Services,
Nottingham for details

0115 985 3500

assist@playwiththebest.com

GM DXM

Our world leading DXM process implements the findings of a 5 year research programme into bat materials and manufacturing technology. Substantial investment in research, expert advice and machinery means:

- + Superior wood conditioning improves the stability and consistency of willow pre-production
- + A new paperless design process using state of the art CAD (Computer Aided Design)
- + Quantum improvements to the vital pressing operation
- + Blade crafting by advanced CAM (Computer Aided Manufacturing)

GM F-TECH

All GM 2020 English Willow bats use optimised F4.5 Face Dynamics



BAT GRADES

We offer English willow bats in nine qualities:

ORIGINAL L.E., ORIGINAL, SIGNATURE L.E., 909, 808, 707, 606, 404 & 303.

Each quality is developed around different grades of willow.

GM GRADING - INDUSTRY LEADING

ORIGINAL L.E. ☆☆☆☆☆

- + The very best unbleached seasoned Grade 1 English Willow
- + Selected for grain structure and weight
- + Limited by willow availability
- + Bats individually tested to ensure 5 Star performance
- + Fitted with top quality treble spring multi-piece cane handle for outstanding feel, flex and control
- + GM NOW! & ToeTek™ finish fitted as standard (see p4 for details)

ORIGINAL ☆☆☆☆☆

- + Superior unbleached seasoned Grade 1 English Willow
- + Predominantly straight grained with a hint of colour and minor cosmetic blemishes
- + Fitted with top quality treble spring multi-piece cane handle for outstanding feel, flex and control
- + GM NOW! & ToeTek™ finish fitted as standard (see p4 for details)

SIGNATURE L.E. ☆☆☆☆☆

- + Prime unbleached seasoned Grade 1 English Willow
- + Predominantly straight grained with colour on one edge and minor cosmetic blemishes
- + Fitted with top quality treble spring multi-piece cane handle for outstanding feel, flex and control
- + GM NOW! & ToeTek™ finish fitted as standard (see p4 for details)

909 ☆☆☆☆☆

- + Unbleached seasoned Grade 1 English Willow
- + Predominantly straight grained with colour on one edge and minor cosmetic blemishes
- + Fitted with top quality treble spring multi-piece cane handle for outstanding feel, flex and control
- + GM NOW! & ToeTek™ finish fitted as standard (see p4 for details)

808 ☆☆☆☆☆

- + Superior unbleached seasoned Grade 2 English Willow
- + Minor blemishes, may have some colour to one edge
- + Fitted with good quality treble spring multi-piece cane handle for outstanding feel, flex and control
- + GM NOW! & ToeTek™ finish fitted as standard (see p4 for details)

707 / SIGNATURE ☆☆☆☆☆

- + Seasoned unbleached Grade 2 English Willow
- + Minor blemishes, may have some colour to one edge
- + Fitted with good quality treble spring cane handle
- + GM NOW! & ToeTek™ finish fitted as standard (see p4 for details)

606 ☆☆☆

- + Superior seasoned unbleached Grade 3 English Willow
- + Minor blemishes, may have some colour to one edge
- + Fitted with good quality treble spring cane handle
- + GM NOW! & ToeTek™ finish fitted as standard (see p4 for details)

404 ☆☆☆

- + Seasoned bleached Grade 3 English Willow
- + Knot marks with some stain/speck
- + Fitted with treble spring cane handle
- + GM NOW! & ToeTek™ finish fitted as standard (see p4 for details)

303 ☆

- + Seasoned Grade 4 English Willow
- + Grained GM polycarbonate DuraCover
- + ToeTek™ toe guard fitted as standard (see page 4 for details)



ORIGINAL
L.E.

ORIGINAL

SIGNATURE
L.E.

909

808



707 /
SIGNATURE

606

404

303



DIAMOND® L540

- + SHORTENED L540 BLADE DESIGN FOR DYNAMIC SWEETSPOT
- + HANDLE LENGTH 310mm
- + F4.5 FACE PROFILE
- + POWERARC BOW FACE PROFILE

- + TRADITIONAL FULL BLADE PROFILE
- + FLOWING CONTOURED SPINE
- + MID SWELL POSITION FOR ALLROUND STROKE PLAY

- + **MADE IN ENGLAND** FROM PRIME ENGLISH WILLOW

MODELS AVAILABLE

DIAMOND® DXM® ORIGINAL L.E.
1144 SH . Harrow . 6 . 5

DIAMOND® DXM® ORIGINAL
1244 SH . Harrow . 6 . 5

DIAMOND® DXM® 909
1544 SH . Harrow . 6 . 5

DIAMOND® DXM® 808
5544 SH . Harrow . 6 . 5 . 4 . 3

DIAMOND® DXM® 707
1444 SH

DIAMOND® DXM® SIGNATURE
1644 SH

DIAMOND® DXM® 606
1344 SH . Harrow . 6 . 5 . 4 . 3

DIAMOND® DXM® 404
1844 SH . Harrow . 6 . 5 . 4 . 3 . 2

NEW DIAMOND® DXM® 404 LITE
2144 4 . 3 . 2 . 1

DIAMOND® DXM® 303
1744 SH . Harrow .
6 . 5 . 4 . 3 . 2 . 1



TERRAIN grip



Perfectly scaled junior bats – the shape of all Junior GM English Willow Bats directly replicate the shape of the Adult version



NEW
GM SIREN™ L540
MADE BY
England's Best

- + SHORTENED L540 BLADE DESIGN FOR DYNAMIC SWEETSPOT
- + HANDLE LENGTH 310mm
- + F4.5 FACE PROFILE
- + PRONOUNCED STRIKING SPINE PROFILE
- + POWERARC BOW FACE PROFILE
- + CONCAVED BACK PROFILE ENHANCES PICK-UP
- + LOW SWELL POSITION FOR FRONT FOOT POWER PLAY
- + **MADE IN ENGLAND** FROM PRIME ENGLISH WILLOW

MODELS AVAILABLE

SIREN™ DXM® ORIGINAL L.E.
1194 SH . Harrow . 6 . 5

SIREN™ DXM® ORIGINAL
1294 SH . Harrow . 6 . 5

SIREN™ DXM® 909
1594 SH

SIREN™ DXM® 808
5594 SH . Harrow . 6 . 5 . 4

SIREN™ DXM® SIGNATURE
1694 SH

SIREN™ DXM® 606
1394 SH . Harrow . 6 . 5 . 4 . 3

SIREN™ DXM® 404
1894 SH . Harrow . 6 . 5 . 4 . 3

SIREN™ DXM® 303
1794 SH . Harrow .
6 . 5 . 4 . 3 . 2

ATTACKING
PROFILE

HEX grip

Perfectly scaled junior bats – the shape of all Junior GM English Willow Bats directly replicate the shape of the Adult version



NEW

GM ^{MADE BY} *England's Best* ICON[®] L555

- + TRADITIONAL L555 BLADE LENGTH
- + HANDLE LENGTH 295mm
- + F4.5 FACE PROFILE
- + LIGHTWEIGHT PROFILE DESIGN
- + POWERARC BOW FACE PROFILE
- + MID TO HIGH SWELL POSITION FOR STROKE PLAY ALL AROUND THE WICKET
- + FULLY CONCAVED BACK PROFILE MAXIMISES PICK-UP
- + **MADE IN ENGLAND** FROM PRIME ENGLISH WILLOW

MODELS AVAILABLE

ICON[®] DXM[®] ORIGINAL L.E.
1104 SH . Academy

ICON[®] DXM[®] ORIGINAL
1204 SH

ICON[®] DXM[®] 909
1504 SH

ICON[®] DXM[®] 808
5504 SH . Academy

ICON[®] DXM[®] SIGNATURE
1604 SH

ICON[®] DXM[®] 606
1304 SH . Academy

ICON[®] DXM[®] 404
1804 SH

NOTHING TO
HIDE

HEX grip

Perfectly scaled junior bats – the shape of all Junior GM English Willow Bats directly replicate the shape of the Adult version



NEW

GM ECLIPSE[®] L540

MADE BY
England's Best

- + SHORTENED L540 BLADE DESIGN FOR DYNAMIC SWEETSPOT
- + HANDLE LENGTH 310mm
- + F4.5 FACE PROFILE
- + SLIGHT OFFSET EDGE INCREASES POWER TO BALANCE RATIO
- + SWEEPING SPINE PROFILE CREATES EXCEPTIONAL PICK UP
- + HIGH SWELL POSITION FOR CONTROLLED STROKE PLAY
- + TRADITIONAL FULL BLADE PROFILE
- + **MADE IN ENGLAND** FROM PRIME ENGLISH WILLOW

MODELS AVAILABLE

ECLIPSE[®] DXM[®] ORIGINAL L.E.
1184 SH

ECLIPSE[®] DXM[®] ORIGINAL
1284 SH

ECLIPSE[®] DXM[®] 909
1584 SH

ECLIPSE[®] DXM[®] 808
5584 SH . Harrow . 6 . 5

ECLIPSE[®] DXM[®] SIGNATURE
1684 SH

ECLIPSE[®] DXM[®] 606
1384 SH . Harrow . 6 . 5 . 4

ECLIPSE[®] DXM[®] 404
1884 SH . Harrow . 6 . 5 . 4

SUPERB
PICK-UP AND
FEEL

HEX grip

Perfectly scaled junior bats – the shape of all Junior GM English Willow Bats directly replicate the shape of the Adult version



GM NOIR™ L555

MADE BY
England's Best

- + TRADITIONAL L555 BLADE LENGTH
- + HANDLE LENGTH 295mm
- + F4.5 FACE PROFILE
- + PARTIALLY CONCAVED BACK PROFILE AIDS BALANCE AND PICK-UP

- + LOW TO MID SWELL POSITION FOR FRONT FOOT PLAY
- + HUGE PRONOUNCED EDGES IN THE DRIVE ZONE
- + ENGINEERED POWER

- + **MADE IN ENGLAND** FROM PRIME ENGLISH WILLOW

MODELS AVAILABLE

NOIR™ DXM® ORIGINAL L.E.
1114 SH

NOIR™ DXM® ORIGINAL
1214 SH . Small

NOIR™ DXM® 909
1514 SH

NOIR™ DXM® 808
5514 SH . Small . Harrow . 6 . 5

NOIR™ DXM® SIGNATURE
1614 SH

NOIR™ DXM® 606
1314 SH . Small . Harrow . 6 . 5 . 4

NOIR™ DXM® 404
1814 SH . Small . Harrow . 6 . 5 . 4

HUGE
STEALTH-LIKE
POWER

TERRAIN grip

Perfectly scaled junior bats – the shape of all Junior GM English Willow Bats directly replicate the shape of the Adult version

GM ZELOS™ L555

MADE BY
England's Best

- + TRADITIONAL L555 BLADE LENGTH
- + HANDLE LENGTH 295mm
- + F4.5 FACE PROFILE
- + ULTRA CURVE HANDLE/FACE PROFILE

- + CONTOURED SPINE PROFILE
- + LOW TO MID SWELL POSITION FOR ALLROUND POWER PLAY
- + PARTIALLY CONCAVED BACK PROFILE FOR SUPREME BALANCE

- + **MADE IN ENGLAND** FROM PRIME ENGLISH WILLOW

MODELS AVAILABLE

ZELOS™ DXM® ORIGINAL L.E.
1154 SH
ZELOS™ DXM® ORIGINAL
1254 SH
ZELOS™ DXM® 808
5554 SH
ZELOS™ DXM® SIGNATURE
1654 SH
ZELOS™ DXM® 606
1354 SH
ZELOS™ DXM® 404
1854 SH

ULTRA
BEAUTIFULLY
BOWED!
CURVE



Perfectly scaled junior bats – the shape of all Junior GM English Willow Bats directly replicate the shape of the Adult version





NEW

404 LITE



TRAINING BATS



DIAMOND® DXM® 404 LITE 2144

4 . 3 . 2 . 1

GM English Willow Diamond Lite 404 Junior cricket bats feature an optimised shape and specification for superb size to weight ratio.

+ 2½oz AVERAGE WEIGHT REDUCTION

GM - HELPING YOUNG CRICKETERS ACHIEVE THEIR POTENTIAL TO BECOME THE STARS OF TOMORROW.

PERFECT GM DESIGN FOR BATSMEN,
COACHES, FIELDING PRACTICE.
ACCEPT NO SUBSTITUTES!



ZELOS™ CATCHING BAT 1900

ONE SIZE

- + PERFECT TRAINING AID FOR CATCHING PRACTICE
- + IDEAL FOR COACHES TO HIT SINGLE HANDED LONG OR SHORT RANGE CATCHES
- + SHORTER BLADE REDUCES WEIGHT AND CREATES GREATER ACCURACY AND CONSISTENCY
- + **MADE IN ENGLAND** FROM PRIME ENGLISH WILLOW

ZELOS™ NARROW BAT 1901

SH . Harrow . 6 . 5

- + REALISTIC FULL WIDTH WEIGHTS FOR A MORE FAMILIAR FEEL TO YOUR MATCH BAT
- + MID SWELL POSITION WITH FULL CONVEX BACK PROFILE
- + MAKE TRAINING HARDER TO IMPROVE CHANCES OF REPEATED SUCCESS OUT IN THE MIDDLE!
- + **MADE IN ENGLAND** FROM PRIME ENGLISH WILLOW



KASHMIR WILLOW BATS

MADE IN INDIA



NEW

SIREN™ 202 NARROW BAT 1933 SH

- + Realistic full width weights for a more familiar feel to your match bat
- + Perfect training aid
- + Made in India from Grade 1 Kashmir Willow
- + HEX grip



NEW

SIREN™ 202 1903

SH • HARROW • 6 • 5 • 4

- + Grade 1 Kashmir Willow
- + 'Ready to play' – Covered for immediate use and durability
- + ToeTek™ protection reduces toe damage and increases resistance to damp
- + Treble spring handle
- + HEX grip



DIAMOND® 101 1909

SH • HARROW

• 6 • 5 • 4 • 3 • 2 • 1 • 0

- + Grade 1 Kashmir Willow
- + Great Value Kashmir Willow - Natural finish
- + Dynamic grip



NEW

ECLIPSE® 1916

SH • HARROW

• 6 • 5 • 4 • 3 • 2 • 1 • 0

- + Entry Level Kashmir Willow



IMPORTANT

Bats from India and Pakistan have some different characteristics from English made bats and even though the faces of these bats have been pressed to give a tough resilient surface, nevertheless some surface cracks and indentations will, in all probability, appear in use. Such markings should be ignored; they are normal for this type of timber and will not detract from the continuing good performance of the bat.

GM YOUNG GUNN

THE GM 'YOUNG GUNN' RANGE HAS BEEN SPECIALLY DESIGNED TO GIVE FUTURE INTERNATIONAL CRICKETERS A FLYING START TO THEIR CAREERS. ALL PRODUCTS FEATURED IN THIS RANGE HAVE BEEN APPROVED AND ENDORSED BY TEAM GM.

QUINTON DE KOCK
SOUTH AFRICA

NEW

ECLIPSE® CRICKET SET 4242

SIZE 6 • 4 • 2

Contains:

- + 1 ECLIPSE Cricket Bat
- + 1 pair of ambidextrous Batting Gloves
- + 1 Soft Tennis/Cricket Ball
- + 4 Stumps & 1 Bail
- + Durable carry bag



DIAMOND® CRICKET SET 4246

SIZE 5 • 3 • 1

Contains:

- + 1 DIAMOND Cricket Bat
- + 1 Soft Tennis/Cricket Ball
- + 4 Stumps & 1 Bail
- + Durable carry bag



ENDORSED
BY WORLD
CUP WINNER
**BEN
STOKES**

DIAMOND® MINI CRICKET SET 4220

ONE SIZE

Contains:

- + 1 Miniature Diamond Bat, 1 set of Stumps on a wooden base, 1 set of Bails and 1 Miniature Tennis Ball
- + Great fun for indoor and outdoor use





YOUNG GUNN



ICON® ALL-WEATHER CRICKET SET 4238

SIZE 6 • 4

Contains:

- + 1 ICON Moulded Cricket Bat
- + 3 All-Weather Stumps
- + 1 Soft Rubber Ball
- + 1 All-Weather Base
- + Durable carry bag

**BATS,
STUMPS AND
BASES MADE FROM
RECYCLABLE
PLASTIC**

STRIKER® CRICKET SET 4260

ONE SIZE Recommended Age 8-11 years

Contains:

- + 1 Moulded Cricket Bat
- + 1 All-Weather Base
- + 1 All-Weather Rubber Ball
- + 3 All-Weather Stumps
- + Ideal cricket set for a young cricketer's development
- + Bat perfectly sized for maximum enjoyment

STRIKER® CRICKET BAT ONLY 4600

Recommended Age 8-11 years

**IDEAL
FIRST
CRICKET
SET**

OPENER CRICKET SET 4250

ONE SIZE Recommended Age 4-8 years

Contains:

- + 1 Moulded Cricket Bat
- + 1 All-Weather Rubber Ball
- + 1 All-Weather Base
- + 3 All-Weather Stumps

OPENER CRICKET BAT ONLY 4500

Recommended Age 4-8 years





BATTING PADS



XRD® Technology is all about action – and impact!

Like all PORON microcellular products, XRD Extreme Impact Protection is open cell, comfortable, flexible, breathable and lightweight, the XRD protection difference is especially apparent at high speed impact.

The soft contouring material instantly dissipates force upon impact absorbing up to 90% of energy, by forming a comfortable protective shell that shields the body from impact better than other protective foams currently available. As a batsman this allows you to focus on the intensity and challenge of the game situation, not the impact.

On the measure that matters most - absorbing more impact energy at higher speeds - need we say more?



NEW

**ORIGINAL
LIMITED EDITION**

5020
LARGE ADULT • ADULT • SMALL ADULT



Comfort straps on ORIGINAL LE, DIAMOND ORIGINAL & SIREN 909 batting pads



Embossed strap tabs and stylish co-ordinated pad straps



XRD® Extreme Impact Protection knee locator for maximum protection



Extensive use of classy blind embossed knee roll logo

BATTING PADS SPECIFICATIONS

		APPROX WEIGHT PER PAIR (KG)	RH/LH	AMBI	FACING				CONSTRUCTION		VERTICAL BOLSTER					ONE-PIECE LOW DENSITY INTERIOR BOLSTER	STITCHED-IN TOP HAT	KNEE LOCATOR						STRAPS			INSTEP																																																																																																																																																																																																																																																																																																																																																																																																																																																																																																																																																																																																																																																																																																																																																																																																																																																																																																																																																																																																																																																																																																																																														
					PRO PU	PU+	PU	PVC	TRADITIONAL COTTON/ CANE	HIGH DENSITY FOAM/REVERSE CANE	COMFORT FOAM	LOW DENSITY FOAM	PLASTIC FIBRE	U FOAM	RAW COTTON			XRD	PLASTIC FIBRE	TRI- LAYER FOAM	DUAL LAYER FOAM	LD FOAM/ COTTON	LOW DENSITY FOAM	COMFORT	2"	1"	COMFORT	PU	MESH	PVC																																																																																																																																																																																																																																																																																																																																																																																																																																																																																																																																																																																																																																																																																																																																																																																																																																																																																																																																																																																																																																																																																																																																											
5020	Original LE	2.10	●		●				●		●	●	●			●	●	●	●	●	●	●	●	●	●	●	●	●	●	●	●	●	●	●	●	●	●	●	●	●	●	●	●	●	●	●	●	●	●	●	●	●	●	●	●	●	●	●	●	●	●	●	●	●	●	●	●	●	●	●	●	●	●	●	●	●	●	●	●	●	●	●	●	●	●	●	●	●	●	●	●	●	●	●	●	●	●	●	●	●	●	●	●	●	●	●	●	●	●	●	●	●	●	●	●	●	●	●	●	●	●	●	●	●	●	●	●	●	●	●	●	●	●	●	●	●	●	●	●	●	●	●	●	●	●	●	●	●	●	●	●	●	●	●	●	●	●	●	●	●	●	●	●	●	●	●	●	●	●	●	●	●	●	●	●	●	●	●	●	●	●	●	●	●	●	●	●	●	●	●	●	●	●	●	●	●	●	●	●	●	●	●	●	●	●	●	●	●	●	●	●	●	●	●	●	●	●	●	●	●	●	●	●	●	●	●	●	●	●	●	●	●	●	●	●	●	●	●	●	●	●	●	●	●	●	●	●	●	●	●	●	●	●	●	●	●	●	●	●	●	●	●	●	●	●	●	●	●	●	●	●	●	●	●	●	●	●	●	●	●	●	●	●	●	●	●	●	●	●	●	●	●	●	●	●	●	●	●	●	●	●	●	●	●	●	●	●	●	●	●	●	●	●	●	●	●	●	●	●	●	●	●	●	●	●	●	●	●	●	●	●	●	●	●	●	●	●	●	●	●	●	●	●	●	●	●	●	●	●	●	●	●	●	●	●	●	●	●	●	●	●	●	●	●	●	●	●	●	●	●	●	●	●	●	●	●	●	●	●	●	●	●	●	●	●	●	●	●	●	●	●	●	●	●	●	●	●	●	●	●	●	●	●	●	●	●	●	●	●	●	●	●	●	●	●	●	●	●	●	●	●	●	●	●	●	●	●	●	●	●	●	●	●	●	●	●	●	●	●	●	●	●	●	●	●	●	●	●	●	●	●	●	●	●	●	●	●	●	●	●	●	●	●	●	●	●	●	●	●	●	●	●	●	●	●	●	●	●	●	●	●	●	●	●	●	●	●	●	●	●	●	●	●	●	●	●	●	●	●	●	●	●	●	●	●	●	●	●	●	●	●	●	●	●	●	●	●	●	●	●	●	●	●	●	●	●	●	●	●	●	●	●	●	●	●	●	●	●	●	●	●	●	●	●	●	●	●	●	●	●	●	●	●	●	●	●	●	●	●	●	●	●	●	●	●	●	●	●	●	●	●	●	●	●	●	●	●	●	●	●	●	●	●	●	●	●	●	●	●	●	●	●	●	●	●	●	●	●	●	●	●	●	●	●	●	●	●	●	●	●	●	●	●	●	●	●	●	●	●	●	●	●	●	●	●	●	●	●	●	●	●	●	●	●	●	●	●	●	●	●	●	●	●	●	●	●	●	●	●	●	●	●	●	●	●	●	●	●	●	●	●	●	●	●	●	●	●	●	●	●	●	●	●	●	●	●	●	●	●	●	●	●	●	●	●	●	●	●	●	●	●	●	●	●	●	●	●	●	●	●	●	●	●	●	●	●	●	●	●	●	●	●	●	●	●	●	●	●	●	●	●	●	●	●	●	●	●	●	●	●	●	●	●	●	●	●	●	●	●	●	●	●	●	●	●	●	●	●	●	●	●	●	●	●	●	●	●	●	●	●	●	●	●	●	●	●	●	●	●	●	●	●	●	●	●	●	●	●	●	●	●	●	●	●	●	●	●	●	●	●	●	●	●	●	●	●	●	●	●	●	●	●	●	●	●	●	●	●	●	●	●	●	●	●	●	●	●	●	●	●	●	●	●	●	●	●	●	●	●	●	●	●	●	●	●	●	●	●	●	●	●	●	●	●	●	●	●	●	●	●	●	●	●	●	●	●	●	●	●	●	●	●	●	●	●	●	●	●	●	●	●	●	●	●	●	●	●	●	●	●	●	●	●	●	●	●	●	●	●	●	●	●	●	●	●	●	●	●	●	●	●	●	●	●	●	●	●	●	●	●	●	●	●	●	●	●	●	●	●	●	●	●	●	●	●	●	●	●	●	●	●	●	●	●	●	●	●	●	●	●	●	●	●	●	●	●	●	●	●	●	●	●	●	●	●	●	●	●	●	●	●	●	●	●	●	●	●	●	●	●	●	●	●	●	●	●	●	●	●	●	●	●	●	●	●	●	●	●	●	●	●	●	●	●	●	●	●	●	●	●	●	●	●	●	●	●	●	●	●	●	●	●	●	●	●	●	●	●	●	●	●	●	●	●	●	●	●	●	●	●	●	●	●	●	●	●	●	●	●	●	●	●	●	●	●	●	●	●	●	●	●	●	●	●	●	●	●	●	●	●	●	●	●	●	●	●	●	●	●	●	●	●	●	●	●	●	●	●	●	●	●	●	●	●	●	●	●	●	●	●	●	●	●	●	●	●	●	●	●	●	●	●	●	●	●	●	●	●	●	●	●	●	●	●	●	●	●	●	●	●	●	●	●	●	●	●	●	●	

BEN STOKES
ENGLAND

USED
BY WORLD
CUP WINNER
**BEN
STOKES**



Personal Protective Equipment. All Gunn & Moore Personal Protective Equipment complies with Personal Protective Equipment (EC Directive) Regulations S.I. 1192/3139 implementing EC Directive 89/686/EEC. All protective materials used in our batting gloves and leg guards have been tested and conform to Impact Resistance BS 6183, British Standards Institution.



NEW

DIAMOND® ORIGINAL

5025

LARGE ADULT • ADULT • SMALL ADULT



NEW

SIREN 909

5022

ADULT • SMALL ADULT

BATTING PADS SPECIFICATIONS

		APPROX WEIGHT PER PAIR (KG)	RH/LH	AMBI	FACING				CONSTRUCTION		VERTICAL BOLSTER					ONE-PIECE LOW DENSITY INTERIOR BOLSTER	STITCHED-IN TOP HAT	KNEE LOCATOR					STRAPS			INSTEP		
					PRO	PU	PU+	PVC	TRADITIONAL COTTON/ CANE	HIGH DENSITY FOAM/REVERSE CANE	COMFORT FOAM	LOW DENSITY FOAM	PLASTIC FIBRE	U FOAM	RAW COTTON			XRD	PLASTIC FIBRE	TRI- LAYER FOAM	DUAL LAYER FOAM	LD FOAM/ COTTON	LOW DENSITY FOAM	COMFORT	2"	1"	COMFORT	PU
5020	Original LE	2.10	●		●				●		●	●	●			●	●	●	●	●	●	●	●	●				
5025	Diamond Original	2.05	●			●			●		●	●	●			●	●	●	●	●	●	●	●	●				
5022	Siren 909	1.95	●			●			●		●	●	●			●	●	●	●	●	●	●	●	●				
5534	Diamond 808	1.95	●				●			●		●	●			●	●	●	●	●	●	●	●	●			●	
5532	808	2.00	●				●		●		●	●	●			●	●	●	●	●	●	●	●	●			●	
5537	Maxi	2.05	●				●		●		●	●	●			●	●	●	●	●	●	●	●	●			●	
5030	Siren 606	1.75	●				●			●				●		●	●	●	●	●	●	●	●	●			●	
5028	505	1.75	●				●		●			●	●			●	●	●		●	●	●	●	●			●	
5026	Diamond	1.95	●					●		●			●			●	●	●	●	●	●	●	●	●			●	
5027	303	1.90		●				●	●			●	●		●	●	●	●	●	●	●	●	●	●			●	
5056	Siren	1.20 [Yth]		●				●	●			●	●				●	●	●	●	●	●	●	●			●	



BATTING PADS

SARAH TAYLOR
ENGLAND



NEW

DIAMOND® 808

5S34
LARGE ADULT • ADULT • SMALL ADULT
• YOUTHS • JUNIOR

PROFESSIONAL
PROTECTION



808 NEW

5S32
LARGE ADULT • ADULT • SMALL ADULT
• YOUTHS • JUNIOR

BATTING PADS 2020 SIZE GUIDE

2020 SIZING	HISTORICAL GM SIZING
LARGE ADULT	OVERSIZED MENS
ADULT	MENS
SMALL ADULT	SMALL MENS
EXTRA SMALL ADULT	WOMENS
YOUTHS	YOUTHS
JUNIOR	JUNIOR
SMALL JUNIOR	JUNIOR SMALL
EXTRA SMALL JUNIOR	JUNIOR XTRA SMALL

GM BAT INFO

ENGLISH
WILLOW BATS

TRAINING BATS

KASHMIR BATS

YOUNG GUNN

BATTING PADS

BATTING GLOVES

WICKET KEEPING

PROTECTION

HELMETS

BAGS

FOOTWEAR

TROUSERS
& SHIRTS

PERFORMANCE
TRAINING
WEAR

KNITWEAR
& FLEECES

RUBBER GRIPS

CRICKET BALLS

ACCESSORIES

GM IN-STORE

PLAYER
EDITION BATS

BS55 RANGE

www.gm-cricket.com



gmcriccket



Personal Protective Equipment. All Gunn & Moore Personal Protective Equipment complies with Personal Protective Equipment (EC Directive) Regulations S.I. 1192/3139 implementing EC Directive 89/686/EEC. All protective materials used in our batting gloves and leg guards have been tested and conform to Impact Resistance BS 6183, British Standards Institution.



BLACK



RED

MAXI **NEW**

5S37 (NAVY/BLOCK/RED)

- LARGE ADULT • ADULT
- SMALL ADULT
- EXTRA SMALL ADULT
- YOUTHS

ALL MAXI
PRE-ORDER
ONLY



SIREN 606 **NEW**

5030

- LARGE ADULT • ADULT • SMALL ADULT
- EXTRA SMALL ADULT • YOUTHS • JUNIOR



BATTING PADS



505 **NEW**

5028
ADULT • SMALL ADULT • YOUTHS
• JUNIOR • SMALL JUNIOR

**GREAT
VALUE**



AIDEN MARKRAM
SOUTH AFRICA



DIAMOND **NEW**

5026
ADULT • SMALL ADULT • EXTRA SMALL ADULT
• YOUTHS • JUNIOR • SMALL JUNIOR



JAMES VINCE
ENGLAND



BATTING PADS



Personal Protective Equipment. All Gunn & Moore Personal Protective Equipment complies with Personal Protective Equipment (EC Directive) Regulations S.I. 1192/3139 implementing EC Directive 89/686/EEC. All protective materials used in our batting gloves and leg guards have been tested and conform to Impact Resistance BS 6183, British Standards Institution.



AMBIDEXTROUS
DESIGNS



303 **NEW**

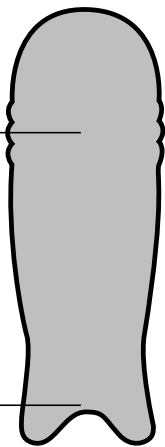
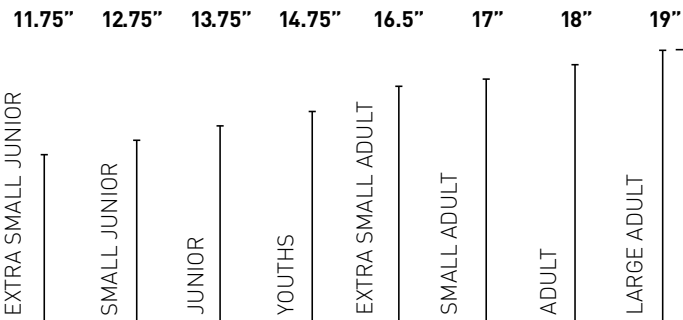
5027
ADULT • SMALL ADULT • YOUTHS
• JUNIOR • SMALL JUNIOR

NEW
SIREN

5056
SMALL ADULT • YOUTHS • JUNIOR • SMALL JUNIOR • EXTRA SMALL JUNIOR

BATTING PADS PAD LENGTH

HEIGHT FROM TOP OF INSTEP TO MIDDLE OF KNEE



GM BATTING GLOVES



The Best Repeated Impact Absorption Material!

- + Soft and contouring against the body, yet instantly dissipates force upon impact
- + Absorbs up to 90% of energy when impacted at high strain rates
- + Maintains performance beyond the life of the product
- + Consistent repeated impact absorption
- + Excellent compression-set resistance
- + Microban® antimicrobial protection inhibits the growth of stain and odour-causing bacteria



ORIGINAL **NEW** LIMITED EDITION

5175 LARGE ADULT • ADULT • SMALL ADULT

USED
BY WORLD
CUP WINNER
**BEN
STOKES**



NEW

DIAMOND® ORIGINAL 5177

LARGE ADULT • ADULT • SMALL ADULT

BATTING GLOVES SPECIFICATIONS

			PALM					BACK OF HAND				FINGER ROLLS						BACK OF HAND FILLING								SWEATBAND		
			PITTA LEATHER	CALF LEATHER	SPLIT LEATHER	COTTON		ADDITIONAL PALM WEAR PATCH	PRO PU	PU+	PU	PVC	XRD & FIBRE OVERFLAPS WITH RAW COTTON	XRD & FIBRE	HD FOAM & FIBRE OVERFLAPS WITH RAW COTTON	HD FOAM & RAW COTTON	HD FOAM & FIBRE	RAW COTTON & FIBRE	RAW COTTON	HD FOAM	PLASTIC FIBRE					MD FOAM	RAW COTTON	SOFT-FILL COMFORT
5175	Original LE	0.44	●				●	●				●		●				●	●			●	●	●	●	●	●	
5177	Diamond Original	0.35		●			●	●				●			●			●	●			●	●	●	●	●	●	
5192	Siren 909	0.48		●			●		●					●			●	●			●	●	●	●	●	●	●	
5548	Diamond 808	0.35		●			●		●					●			●	●			●	●	●	●	●	●	●	
5541	Maxi	0.38		●			●		●					●			●	●			●	●	●	●	●	●	●	
5546	808	0.48		●			●			●				●			●	●			●	●	●	●	●	●	●	
5194	Siren 606	0.45		●			●			●			●		●		●	●			●	●	●	●	●	●	●	
5195	505	0.32		●			●			●				●			●	●			●	●	●	●	●	●	●	
5196	Diamond	0.40		●			●				●						●	●			●	●	●	●	●	●	●	
5179	303	0.42		●			●				●						●	●			●	●	●	●	●	●	●	
5197	Siren Plus	0.37			●		●				●						●	●			●	●	●	●	●	●	●	
5168	Siren	0.33				●	●				●						●	●			●	●	●	●	●	●	●	●



Personal Protective Equipment. All Gunn & Moore Personal Protective Equipment complies with Personal Protective Equipment (EC Directive) Regulations S.I. 1192/3139 implementing EC Directive 89/686/EEC. All protective materials used in our batting gloves and leg guards have been tested and conform to Impact Resistance BS 6183, British Standards Institution.



ENGINEERED
OFFSET
FINGER SPLITS



SIREN 909 **NEW**
5192
ADULT • SMALL ADULT



NEW
DIAMOND® 808
5S48
LARGE ADULT • ADULT • SMALL ADULT • YOUTHS • JUNIOR



OLLIE POPE
ENGLAND

BATTING GLOVES SPECIFICATIONS

		APPROX WEIGHT PER PAIR (KG)	PALM				ADDITIONAL PALM WEAR PATCH	BACK OF HAND				FINGER ROLLS						BACK OF HAND FILLING				SOFT-FILL COMFORT	COMFORT LINING	TWO-PIECE THUMB	SIDE BAR PROTECTION	SWEATBAND	
			PITTARD LEATHER	CALF LEATHER	SPLIT LEATHER	COTTON		PRO PU	PU+	PU	PVC	XRD & FIBRE OVERLAPS WITH RAW COTTON	XRD & FIBRE	HD FOAM & FIBRE OVERLAPS WITH RAW COTTON	HD FOAM & RAW COTTON	HD FOAM & FIBRE	RAW COTTON & FIBRE	RAW COTTON	HD FOAM	PLASTIC FIBRE	MD FOAM					RAW COTTON	DOUBLE SIDED
5175	Original LE	0.44	•				•	•				•					•	•			•	•	•	•	•		
5177	Diamond Original	0.35		•			•	•						•			•	•			•	•	•	•	•		
5192	Siren 909	0.48		•			•		•					•			•	•			•	•	•	•	•		
5548	Diamond 808	0.35		•			•		•						•		•	•			•	•	•	•	•		
5541	Maxi	0.38		•			•		•						•		•	•			•	•	•	•	•		
5546	808	0.48		•			•			•							•	•			•	•	•	•	•		
5194	Siren 606	0.45		•			•			•					•		•	•			•	•	•	•	•		
5195	505	0.32		•			•			•							•	•			•	•	•	•	•		
5196	Diamond	0.40		•			•				•						•	•	•		•	•	•	•	•		
5179	303	0.42		•			•				•						•	•	•		•	•	•	•	•		
5197	Siren Plus	0.37			•		•										•	•	•		•	•	•	•	•		
5168	Siren	0.33				•	•				•						•	•	•		•	•	•	•	•	•	



BATTING GLOVES

NEW

MAXI

5S41 (NAVY/BLOCK/RED)
LARGE ADULT • ADULT • SMALL ADULT
• EXTRA SMALL ADULT • YOUTHS



BLACK



RED



ALL MAXI
PRE-ORDER
ONLY



808 NEW

5S46
LARGE ADULT • ADULT • SMALL ADULT •
YOUTHS • JUNIOR

DAVID MALAN
ENGLAND



BATTING GLOVES



Personal Protective Equipment. All Gunn & Moore Personal Protective Equipment complies with Personal Protective Equipment (EC Directive) Regulations S.I. 1192/3139 implementing EC Directive 89/686/EEC. All protective materials used in our batting gloves and leg guards have been tested and conform to Impact Resistance BS 6183, British Standards Institution.



SIREN 606 NEW

5194
LARGE ADULT • ADULT • SMALL ADULT
• EXTRA SMALL ADULT • YOUTHS • JUNIOR



LIGHTWEIGHT
DESIGN

505 NEW

5195
ADULT • SMALL ADULT • YOUTHS
• JUNIOR • SMALL JUNIOR



DIAMOND NEW

5196
ADULT • SMALL ADULT • EXTRA SMALL ADULT
• YOUTHS • JUNIOR • SMALL JUNIOR

COMFORT WITH
PROTECTION



2020 SIZING	HISTORICAL GM SIZING
LARGE ADULT	OVERSIZED MENS
ADULT	MENS
SMALL ADULT	SMALL MENS
EXTRA SMALL ADULT	WOMENS
YOUTHS	YOUTHS
JUNIOR	JUNIOR
SMALL JUNIOR	JUNIOR SMALL
EXTRA SMALL JUNIOR	JUNIOR XTRA SMALL



BATTING GLOVES



Personal Protective Equipment. All Gunn & Moore Personal Protective Equipment complies with Personal Protective Equipment (EC Directive) Regulations S.I. 1192/3139 implementing EC Directive 89/686/EEC. All protective materials used in our batting gloves and leg guards have been tested and conform to Impact Resistance BS 6183, British Standards Institution.



LIGHTWEIGHT
BACK OF HAND
DESIGN

303 NEW

5179
ADULT • SMALL ADULT • YOUTHS • JUNIOR • SMALL JUNIOR



NEW

SIREN PLUS

5197
SMALL ADULT • YOUTHS • JUNIOR
• SMALL JUNIOR • EXTRA SMALL JUNIOR



SIREN NEW

5168
YOUTHS • JUNIOR • SMALL JUNIOR • EXTRA SMALL JUNIOR

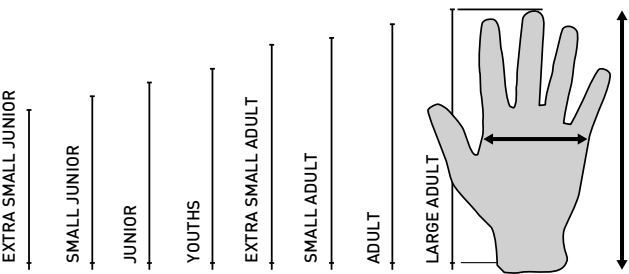


AMY JONES
ENGLAND

BATTING GLOVES

HEIGHT FROM WRIST TO TOP OF MIDDLE FINGER

↑	14.5cm	15.75cm	17cm	18.25cm	19cm	19.5cm	20.75cm	22cm
↔	7cm	8.25cm	9.5cm	10cm	10.5cm	10.75cm	11.25cm	12cm





WICKET KEEPING RANGE



BLACK



RED

NEW

MAXI

5S66 (NAVY/BLACK/RED)
ADULT

ALL MAXI
PRE-ORDER
ONLY



NEW

SIREN 909

5067
ADULT

NEW

ORIGINAL

5065
ADULT • YOUTHS



DANE VILAS
SOUTH AFRICA

WICKET KEEPING PADS SPECIFICATIONS

CODE	DESCRIPTION	APPROX WEIGHT PER PAIR (KG)	FACING		FACE FILLING				VERTICAL BOLSTER			STRAPS			INSTEP	
			PU	PVC	HIGH DENSITY FOAM	HD FOAM/ CANE	DUAL LAYER FOAM	CANE/LOW DENSITY FOAM	COMFORT/LOW DENSITY FOAM	COMFORT FOAM	LOW DENSITY FOAM	COMFORT	2"	1"	COMFORT	MESH
5S66	Maxi	0.95	•		•				•			••	••		•	•
5065	Original	0.90	•		•				•			••	••		•	•
5067	Siren 909	1.25	•			•			•				••			•
5S74	808 Shinguard*	0.65		•	•					•		••	••			•
5070	606	0.76		•			•			•			••			•
5072	Siren	0.90		•				•			•			••		•

*808 Shinguard see page 31 for details



WICKET KEEPING RANGE



NEW

606

5070
ADULT • YOUTHS
• JUNIOR

**FANTASTIC
VALUE**



NEW

SIREN

5072
ADULT • YOUTHS • JUNIOR
• SMALL JUNIOR

INNER GLOVES

ALL INNER GLOVES PACKAGED IN
HANGING BAG WITH DISPLAY CARD

FULL CHAMOIS INNER 5302 ADULT

- + Superb feel and all day comfort
- + Top quality all chamois leather
- + Breathable fingers for added comfort
- + Double sided sweatband with Velcro closure



CHAMOIS PADDED PALM 5304 ADULT • YOUTHS

- + Lycra back of hand
- + Padded chamois palm
- + Double sided sweatband with Velcro closure



COTTON PADDED PALM 5307 ADULT • YOUTHS

- + Lycra back of hand
- + Cotton padded palm
- + Elasticated wristband



COTTON INNER 5308 ADULT • YOUTHS

- + Quality cotton inner glove
- + Soaks up sweat which in turn gives longer life to gloves



FINGERLESS INNERS 5309 ADULT • YOUTHS • JUNIOR

- + Cotton fingerless inner glove for Batsmen worn with Batting Gloves
- + Soaks up sweat which in turn gives longer life to Batting Gloves





NEW ORIGINAL
LIMITED EDITION

5205
LARGE ADULT • ADULT

50%
GREATER FRICTION
COMPARED TO OTHER
WIDELY USED PALM
MATERIALS



NEW ORIGINAL

5202
LARGE ADULT • ADULT
• YOUTHS



NEW SIREN 909

5201
LARGE ADULT • ADULT



NEW 606

5207
ADULT • YOUTHS • JUNIOR



NEW SIREN

5208
ADULT • YOUTHS • JUNIOR • SMALL JUNIOR

**ALL WICKET
KEEPING GLOVES**
are available with
rounded cuffs to special
order - minimums apply



WICKET KEEPING GLOVES SPECIFICATIONS

CODE	DESCRIPTION	BACK OF HAND			FINGER TABS	LINING			PALM FACING				PALM				CUFFS		'T' WEB (LAW 40.2)
		ANILINE LEATHER	PU	PVC		FULL LEATHER	PU	COTTON	PIN-TUCK TEKNIK PALM	OCTOPUS PALM	NEOPRENE PALM	PIMPLE RUBBER PALM	SHEEPSKIN LEATHER	CALF LEATHER	PVC	GM COTTON PALM FILLING	CANED	PADDED	
5205	Original LE	•			•	•			•				•			•	•	•	•
5202	Original	•			•	•				•			•			•	•		•
5201	Siren 909	•					•				•			•		•		•	•
5207	606		•				•					•		•		•		•	•
5208	Siren			•				•				•			•	•		•	•



PERSONAL PROTECTION

PLAYERS EDITION

THIGH PAD SET 5631 ADULT • SMALL ADULT

- + NEW! Impact force reduction foam combination
- + Waistband protection
- + Ergonomic design
- + Removable/adjustable Inner Thigh Pad
- + Soft elasticated straps with secure 'touch' fastening



**SUPERB
FORCE
DISSIPATION
RESULTS**



ORIGINAL LIMITED EDITION

THIGH PAD SET 5632 ADULT • SMALL ADULT • YOUTHS • JUNIOR

- + Moulded 15mm High Density Foam protection
- + Comfort foam lining for all day comfort
- + Removable/adjustable Inner Thigh Pad
- + Soft elasticated straps with secure 'touch' fastening



ORIGINAL LIMITED EDITION

FOREARM GUARD 5615 ADULT • YOUTHS

- + Professional protection
- + High density foam with pre-shaped fibre insert
- + Removable washable polyester/spandex sleeve

ORIGINAL

THIGH PAD 5602 ADULT • SMALL ADULT • YOUTHS

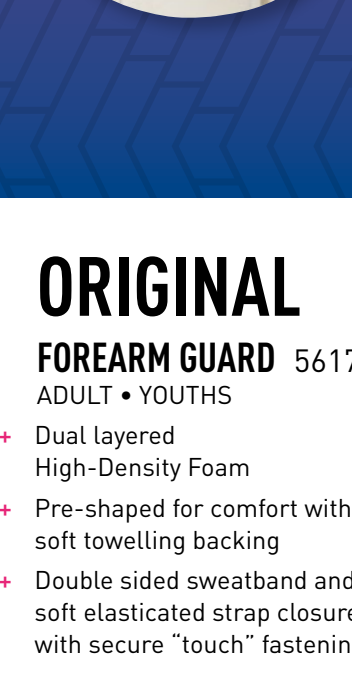
- + Professional protection
- + Dual layered High-Density Foam
- + Pre-shaped for comfort with soft towelling backing
- + Soft elasticated straps with secure "touch" fastening



ORIGINAL

INNER THIGH PAD 5614 ADULT

- + Protects the inner thigh, back leg
- + Dual layered High-Density Foam
- + Pre-shaped for comfort with soft towelling backing
- + Soft elasticated strap with secure "touch" fastening and cotton waist "loops"
- + Can be used with GM thigh pads



ORIGINAL

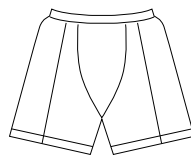
FOREARM GUARD 5617 ADULT • YOUTHS

- + Dual layered High-Density Foam
- + Pre-shaped for comfort with soft towelling backing
- + Double sided sweatband and soft elasticated strap closure with secure "touch" fastening





PERSONAL PROTECTION



909

THIGH PAD 5606
ADULT • YOUTHS • JUNIOR

- + Superb value
- + Dual layered High-Density Foam
- + Ambidextrous lightweight design
- + Soft elasticated straps with secure "touch" fastening



909

FOREARM GUARD 5619
ADULT • YOUTHS • JUNIOR

- + Dual layered high-density foam
- + Pre-shaped for comfort
- + Soft elasticated straps closure with "touch" fastening

909

**SHORTS & PROTECTIVE
PADDING SET 5627**

XTRA LARGE ADULT • LARGE
ADULT • ADULT • SMALL
ADULT • EXTRA SMALL
ADULT • YOUTHS • JUNIOR

- + Washable polyester/spandex shorts
- + Integral pouches for correct location of padding including abdominal guard pouch
- + Abdominal guard not included
- + High density moulded foam thigh pad and inner thigh pad - cut-to-fit for right handed or left handed stance



BOXER SHORT 5625

XXL • XL • L • M • S • LB • MB • SB

- + Special blend stretch cotton for comfort and fit
- + Pouch for abdominal guard
- + Both GM abdominal guards can be used



BOX BRIEF 5622

XXL • XL • L • M • S • LB • MB • SB

- + Special blend stretch cotton for comfort and fit
- + Pouch for abdominal guard
- + Both GM abdominal guards can be used



ATHLETIC SUPPORT 5626

XXL • XL • L • M • S • LB • MB • SB

- + Special blend stretch cotton for comfort and fit
- + Pouch for abdominal guard
- + Both GM abdominal guards can be used



BEN DUCKETT
ENGLAND

NEW

808

SHINGUARD 5S74
ADULT

Refer to specification
chart on page 27



TO BE
WORN
BENEATH
TROUSERS



**ANATOMICALLY SHAPED ABDOMINAL
PADDED GUARD 5630**

ADULT • YOUTHS • JUNIOR • SMALL JUNIOR

- + Strong plastic slip-in guard, padded

**TRADITIONALLY SHAPED ABDOMINAL
PADDED GUARD 5620**

ADULT • YOUTHS • JUNIOR • SMALL JUNIOR

- + Strong plastic slip-in traditional guard, padded



GM HELMETS



NECK PROTECT 4153

Three sizes designed specifically to fit PURIST GEO II

SENIOR LARGE
SENIOR/JUNIOR
JUNIOR SMALL

- + Closed cell synthetic rubber with high impact cushioning in order to prevent trauma to the wearer whilst providing comfort and flexibility
- + Breathable, antibacterial, and highly durable fabric sleeve
- + Easy-fit, secure, soft touch Velcro fastening
- + Easy to clean with a soft, damp cloth



FITTED WITH
GEO
GRILLE

MOST
COMFORTABLE
LINING
YET



PURIST® GEO II HELMET 5017

SENIOR LARGE • SENIOR
JUNIOR • JUNIOR SMALL

CONTEMPORARY FINISH,
TECHNICALLY ADVANCED.

THE PURIST PRO WAS THE MOST DEMANDED HELMET
IN THE MARKET - NOW THERE'S THE PURIST GEO II

- + Complies with BS7928:2013 Specification for Head Protectors for Cricketers, British Standards Institute
- + Improved peak strength and precisely fitted steel Geo grille greatly reduces the risk of the ball penetrating the gap between the two

- + Fitted with a steel Geo grille as standard
- + Rigid, high impact outer shell with EPS liner withstands great force
- + Complete with new dial adjuster band for ease of fitting and removal of helmet mid innings
- + Choice of colours: Navy, Green, Maroon

PURIST GEO II	SENIOR LARGE	SENIOR	JUNIOR	JUNIOR SMALL
Typically fits head size (mm)	580 - 620	540 - 590	540 - 590	520 - 550
Passed Against	Adult Ball Only	Adult & Junior Ball	Junior Ball Only	Junior Ball Only

GM BAT INFO

ENGLISH
WILLOW BATS

TRAINING BATS

KASHMIR BATS

YOUNG GUNN

BATTING PADS

BATTING GLOVES

WICKET KEEPING

PROTECTION

HELMETS

BAGS

FOOTWEAR

TROUSERS
& SHIRTS

PERFORMANCE
TRAINING
WEAR

KNITWEAR
& FLEECES

RUBBER GRIPS

CRICKET BALLS

ACCESSORIES

GM IN-STORE

PLAYER
EDITION BATS

BS55 RANGE

www.gm-cricket.com



gmcricket

GM HELMETS

DANE VILAS
SOUTH AFRICA



AVAILABLE COLOURS



GEO™ STEEL GRILLE

- + Geodesic designs are mathematically proven to be ultra strong structures
- + The use of geodesic designs ensures the grille has optimal impact resistance from all frontal directions

- + All bars of the Geo grille feature properties of geodesic curvature
- + Patent application no. GB 1414762.3 applied for. Registered design number 4036872

GM HELMETS



NECK PROTECT 4253

Three sizes designed specifically to fit the NEON™ GEO Helmet

LARGE
MEDIUM
SMALL

- + Closed cell synthetic rubber with high impact cushioning in order to prevent trauma to the wearer whilst providing comfort and flexibility
- + Breathable, antibacterial, and highly durable fabric sleeve
- + Easy-fit, secure, soft touch Velcro fastening
- + Easy to clean with a soft, damp cloth

NEON™ GEO HELMET

NEON™ GEO 5049

LARGE • MEDIUM • SMALL

TRADITIONALLY STYLED, TECHNICALLY
ADVANCED - SERIOUS HELMET
FOR THE SERIOUS CRICKETER

- + Complies with BS7928:2013 Specification for Head Protectors for Cricketers, British Standards Institute
- + Dual Density EVA foam/EPS combination is comfortable and protects against impact
- + Fitted with a steel Geo grille as standard
- + Sleek grille-shell integration system

- + Lightweight construction provides great balance and vision
- + Specifically engineered internal channels to maximise airflow around the head and between the channels to keep the wearer cool and comfortable
- + Active sweat wicking and ventilation system
- + Choice of colours: Navy, Green, Maroon

NEON GEO	LARGE	MEDIUM	SMALL
Typically fits head size (mm)	590 - 620	560 - 590	530 - 560
Passed Against	Adult Ball Only	Adult & Junior Ball	Adult & Junior Ball

GM BAGS

NEW

ORIGINAL EASI-LOAD WHEELIE

4184

DVO Closed:
92cm x 36cm x 41cm
Volume 136 Litres

DVO Activated:
92cm x 36cm x 49cm
Volume 162 Litres

DVO
DYNAMIC
VOLUME

EXTENDABLE
TOP SECTION

ALL TERRAIN WHEELS

STAND ALONE SYSTEM

TWO FULL SIZE BAT POCKETS

DVO EXPANDS VOLUME BY NEARLY 20%



GM BAGS

LEWIS GREGORY
ENGLAND



NEW

ORIGINAL WHEELIE DUFFLE

4177

96cm x 41cm x 32cm
Volume 126 Litres

- + Versatile manoeuvrability
- + Carry or wheel - your choice
- + Two side pockets designed for your batting pads
- + Two internal bat pockets



NEW

ORIGINAL DUFFLE

4081

98cm x 36cm x 31cm
Volume 109 Litres

- + Gusseted side pockets will hold two bats up to Full Size safely and securely
- + Versatile loading and access with a choice of compartments for various equipment combinations





BAGS



NEW

909
WHEELIE

4174
91cm x 38cm x 31cm
Volume 107 Litres



NEW

808
DUFFLE

5572
DVO Closed:
98cm (back) x 84cm (front)
x 33cm x 38cm
Volume 114 Litres

DVO Activated:
98cm (back) x 98cm (front)
x 33cm x 38cm
Volume 123 Litres



BAGS SPECIFICATIONS

CODE	DESCRIPTION	SIZE (CM)	VOLUME IN LITRES	'dVo' DYNAMIC VOLUME	HEAVY DUTY SCUFF PROTECTION	WHEELIE SYSTEM			STAND ALONE SYSTEM	SHOE TUNNEL	POCKETS				INTERNAL POUCH	HANDLES		STRAPS		ZIPS		ANTI-SCUFF CORNER PROTECTION
						ENGINEERED WHEEL HOUSING	ALL TERRAIN WHEEL	600 DENIER POLYESTER FABRIC			INTEGRATED BAT SLEEVE	ZIPPED SIDE POCKETS	ZIPPED END POCKET	END PANEL BAT HANDLE RING		MOULDED RUBBER	PADDED	CARRY	PADDED ADJUSTABLE SHOULDER	8mm HEAVY DUTY 'D' OPENING	RUST PROOF GM DESIGNER	
4184	Original Easi-Load Wheelie	92 x 36 x 49	162	•	•	•	•	•	•		••	••			•	••	•	•		•	•	•
4177	Original Wheelie Duffle	96 x 41 x 32	126		•	•	•	•			••	••				•			••		•	•
4081	Original Duffle	98 x 36 x 31	109					•		•	••					•			••		•	•
4174	909 Wheelie	91 x 38 x 31	107			•	•	•				••	•		•	•	•	•		•	•	•
5572	808 Duffle	98 x 33 x 38	123	•				•		•	••	••				•			••		•	•
4180	707 Wheelie	90 x 32 x 32	92			•	•	•							•	•	•	•		•	•	•
4179	707 Duffle	76 x 36 x 31	85					•		•	••					•			••		•	•
4085	606 Wheelie	72 x 27 x 28	54			•		•						•			••	•		•	•	•
4079	Striker Holdall	60 x 28 x 28	47					•						•			•	•		•	•	•
4178	Select Duffle	74 x 31 x 24	55					•			•	•							••		•	•
4175	Autograph Backpack	46 x 30 x 18	25					•							•				••		•	•
4171	Boot Bag	35 x 22 x 11						•				•				•					•	
4173	Ball Bag	42 x 28 x 28						•											••			



BAGS



707 **NEW**
DUFFLE

4179
76cm x 36cm x 31cm
Volume 85 Litres



NEW

707 WHEELIE

4180
90cm x 32cm x 32cm
Volume 92 Litres



**AVAILABLE
IN TWO COLOURS**

BAGS SPECIFICATIONS

CODE	DESCRIPTION	SIZE (CM)	VOLUME IN LITRES	'dVo' DYNAMIC VOLUME	HEAVY DUTY SCUFF PROTECTION	WHEELIE SYSTEM			STAND ALONE SYSTEM	SHOE TUNNEL	POCKETS				INTERNAL POUCH	HANDLES		STRAPS		ZIPS		ANTI-SCUFF CORNER PROTECTION
						ENGINEERED WHEEL HOUSING	ALL TERRAIN WHEEL	600 DENIER POLYESTER FABRIC			INTEGRATED BAT SLEEVE	ZIPPED SIDE POCKETS	ZIPPED END POCKET	END PANEL BAT HANDLE RING		MOULDED RUBBER	PADDED	CARRY	PADDED ADJUSTABLE SHOULDER	8mm HEAVY DUTY 'D' OPENING	RUST PROOF GM DESIGNER	
4184	Original Easi-Load Wheelie	92 x 36 x 49	162	•	•	•	•	•	•		••	••			•	••	•	•		•	•	•
4177	Original Wheelie Duffle	96 x 41 x 32	126		•	•	•	•			••	••				•			••	•	•	•
4081	Original Duffle	98 x 36 x 31	109					•		•	••					•			••	•	•	•
4174	909 Wheelie	91 x 38 x 31	107			•	•	•				••	•		•	•	•	•		•	•	•
5572	808 Duffle	98 x 33 x 38	123	•				•		•	••	••				•		••		•	•	•
4180	707 Wheelie	90 x 32 x 32	92			•	•	•							•	•	•	•		•	•	•
4179	707 Duffle	76 x 36 x 31	85					•		•	••					•		••		•	•	•
4085	606 Wheelie	72 x 27 x 28	54			•		•						•			••	•		•	•	•
4079	Striker Holdall	60 x 28 x 28	47					•						•			•	•		•	•	•
4178	Select Duffle	74 x 31 x 24	55					•			•	•							••	•	•	•
4175	Autograph Backpack	46 x 30 x 18	25					•							•				••		•	•
4171	Boot Bag	35 x 22 x 11						•				•					•				•	•
4173	Ball Bag	42 x 28 x 28						•											••			•

GM BAGS

NEW

606 WHEELIE

4085
72cm x 27cm x 28cm
Volume 54 Litres

AVAILABLE
IN TWO COLOURS



NEW

SELECT DUFFLE

4178
74cm x 31cm x 24cm
Volume 55 Litres

GREAT
STARTER
DUFFLE

STRIKER[®] NEW

4079
60cm x 28cm x 28cm
Volume 47 Litres



ADAM LYTH
ENGLAND

GM BAGS

NEW

AUTOGRAPH BACKPACK

4175
46cm x 30cm x 18cm
Volume 25 Litres



GM EASI-SEAT 4185
36cm x 36cm x 9cm when folded

- + Portable, padded seat cover
- + 3 cylindrical storage pockets
- + Adjustable shoulder strap (Chair not included)



NEW

BOOT BAG 4171
35cm x 22cm x 11cm

- + 1 pair capacity
- + Side pocket



NEW

BALL BAG 4173
42cm x 28cm x 28cm

- + 24 Ball capacity



NEW

GM BAT COVER 4061



NEW

FULL LENGTH BAT COVER 4056



STEVEN MULLANEY
ENGLAND



GM ORIGINAL™ FOOTWEAR

ORIGINAL™ NEW

SPIKE 6406

7 - 13 (FULL SIZES) + 8½ & 9½

LIGHTWEIGHT UPPER

- + Three dimensional comfort lining for superior, long lasting fit and feel
- + Ergonomic slip lasted construction for consistent sock-like fit time after time
- + Moulded TPR heel cradle locks foot in place maintaining the shoe's integrity and protecting the delicate heel area

GM loPro SOLE UNIT

- + GM loPro sole unit for a sleek, athletic, functional shoe minus the bulk
- + Compression moulded, lightweight EVA midsole for superior cushioning and comfort
- + Durable, lightweight two tone TPU outsole with strategically placed spikes with supplementary moulded pimple studs for additional grip and stability
- + Injection moulded mid-foot shank provides stability through the arch reducing foot fatigue

TRI-LAYER CUSHIONING

- + Level 1: Ergonomic cold press moulded EVA foot bed with natural latex heel insert
- + Level 2: Cushioned EVA strobel stitched insole board
- + Level 3: Compression moulded phylon midsole providing perfect balance between cushioning and weight

ORIGINAL™ NEW

JUNIOR SPIKE 6407

1 - 6 (FULL SIZES)

ARCH
SUPPORT
REDUCES
FOOT FATIGUE

ORIGINAL™ SPIKE
FITTED WITH STEEL SPIKES

TWO TONE
TPU
OUTSOLE

SPARE STUDS

CRICKET SPIKES

4075

- + Replacement cricket spikes
- + 20 screw-in spikes
- + 1 GM Spanner
- + Blister packed, 12 sets per master carton

CRICKET SOFT STUDS

4082

- + Durastud replacements
- + 20 screw-in studs
- + 1 GM Spanner
- + Blister packed, 12 sets per master carton



ORIGINAL™ FOOTWEAR



ORIGINAL™ **NEW**

ALL ROUNDER 6408
7 - 13 (FULL SIZES)

LIGHTWEIGHT UPPER

- + Three dimensional comfort lining for superior, long lasting fit and feel
- + Ergonomic slip-lasted construction for consistent sock-like fit time after time
- + Moulded TPR heel cradle locks foot in place maintaining the shoe's integrity and protecting the delicate heel area

GM loPro SOLE UNIT

- + GM loPro sole unit for a sleek, athletic, functional shoe minus the bulk
- + Compression moulded, lightweight EVA midsole for superior cushioning and comfort
- + Compression moulded rubber outsole with multi cleat configuration for fantastic grip
- + Injection moulded mid-foot shank provides stability through the arch reducing foot fatigue

TRI-LAYER CUSHIONING

- + Level 1: Ergonomic cold press moulded EVA foot bed with natural latex heel insert
- + Level 2: Cushioned EVA strobel stitched insole board
- + Level 3: Compression moulded phylon midsole providing perfect balance between cushioning and weight

**TRI LAYER
CUSHIONING**

ORIGINAL™ **NEW**

JUNIOR ALL ROUNDER 6409
1 - 6 (FULL SIZES)



ROSS TAYLOR
NEW ZEALAND



ICON® FOOTWEAR



ICON® NEW

SPIKE 6403

7 - 13 (FULL SIZES) + 8½ & 9½

LIGHTWEIGHT UPPER

- + Three dimensional comfort lining for superior, long lasting fit and feel
- + Ergonomic slip lasted construction for consistent sock-like fit time after time
- + Moulded TPR heel cradle locks foot in place maintaining the shoe's integrity and protecting the delicate heel area

GM loPro SOLE UNIT

- + GM loPro sole unit for a sleek, athletic, functional shoe minus the bulk
- + Compression moulded, lightweight EVA midsole for superior cushioning and comfort
- + Durable, lightweight two tone TPU outsole with strategically placed spikes with supplementary moulded pimple studs for additional grip and stability
- + Injection moulded mid-foot shank provides stability through the arch reducing foot fatigue

TRI-LAYER CUSHIONING

- + Level 1: Ergonomic cold press moulded EVA foot bed with natural latex heel insert
- + Level 2: Cushioned EVA strobel stitched insole board
- + Level 3: Compression moulded phylon midsole providing perfect balance between cushioning and weight

ICON® NEW

JUNIOR SPIKE 6413

1 - 6 (FULL SIZES)

ARCH
SUPPORT
REDUCES
FOOT FATIGUE



ICON® SPIKE
FITTED WITH STEEL SPIKES



TRI LAYER
CUSHIONING

SPARE STUDS

CRICKET SPIKES

4075

- + Replacement cricket spikes
- + 20 screw-in spikes
- + 1 GM Spanner
- + Blister packed, 12 sets per master carton



CRICKET SOFT STUDS

4082

- + Durastud replacements
- + 20 screw-in studs
- + 1 GM Spanner
- + Blister packed, 12 sets per master carton



ICON® FOOTWEAR



ICON® NEW

ALL ROUNDER 6404
7 - 13 (FULL SIZES)

LIGHTWEIGHT UPPER

- + Three dimensional comfort lining for superior, long lasting fit and feel
- + Ergonomic slip lasted construction for consistent sock-like fit time after time
- + Moulded TPR heel cradle locks foot in place maintaining the shoe's integrity and protecting the delicate heel area

GM loPro SOLE UNIT

- + GM loPro sole unit for a sleek, athletic, functional shoe minus the bulk
- + Compression moulded, lightweight EVA midsole for superior cushioning and comfort
- + Compression moulded rubber outsole with multi cleat configuration for fantastic grip
- + Injection moulded mid-foot shank provides stability through the arch reducing foot fatigue

TRI-LAYER CUSHIONING

- + Level 1: Ergonomic cold press moulded EVA foot bed with natural latex heel insert
- + Level 2: Cushioned EVA strobel stitched insole board
- + Level 3: Compression moulded phylon midsole providing perfect balance between cushioning and weight

ICON® NEW

JUNIOR ALL ROUNDER 6414
1 - 6 (FULL SIZES)



BEN STOKES
ENGLAND

GM TROUSERS & SHIRTS



MAESTRO SHIRT 7015

XTRA SMALL JNR • SMALL JNR • MEDIUM JNR
• LARGE JNR • S • M • L • XL • XXL • XXXL

- + 100% Polyester interlock jersey
- + Material weight 150g
- + Super lightweight, quick drying, modern fabric
- + Short sleeve and long sleeve

SHORT SLEEVE or LONG SLEEVE



NEW

MAESTRO TROUSERS

- + Athletic fit
- + Quick drying modern fabric
- + Enhanced moisture management
- + Fully elasticated waist
- + Two side pockets

MENS TROUSER 7032

S • M • L • XL • XXL

- + Inside leg: Finished or Unfinished

JUNIOR TROUSER 7031

XTRA XTRA SMALL JNR

• XTRA SMALL JNR • SMALL JNR
• MEDIUM JNR • LARGE JNR

- + Inside leg: Unfinished

GM SHIRTS



TEKNIK™ CLUB SHIRT 7205

XTRA SMALL JNR • SMALL JNR
• MEDIUM JNR • LARGE JNR
• S • M • L • XL • XXL • XXXL

- + 'League Friendly' design
- + Strategically positioned mesh panels at the lower back and underarm for increased cooling and comfort
- + Quick drying 100% Polyester with moisture management built into the yarn for durability
- + Helps to keep the skin dry by wicking moisture away from the body and keeping the garment drier
- + Material weight 180g
- + Should be used in conjunction with the GM Teknik Trousers

TEKNIK™ FABRIC

HELPS TO KEEP SKIN DRY AND GARMENTS DRIER

- + LATEST TEXTILE TECHNOLOGY
- + FABRIC YARNS HAVE BUILT-IN CAPILLARY PROPERTIES
- + WICKS MOISTURE AWAY FROM BODY
- + MOISTURE EVAPORATES FROM THE SURFACE AND IS NOT ABSORBED

	Trim Colour		
Sleeve	Navy	Green	Maroon
Short	✓	✓	✓



PREMIER CLUB SHIRT 7000

XTRA SMALL JNR • SMALL JNR
• MEDIUM JNR • LARGE JNR
• S • M • L • XL • XXL • XXXL

- + 100% Polyester
- + Material weight 170g
- + Designed to fit the movements of all cricketers

	Trim Colour		
Sleeve	Navy	Green	Maroon
Short	✓	✓	✓



ST30 SHIRT 7019

6 • 8 • 10 • 12 • 14 • 16 • 18

- Ladies cut
- Ultra modern, sleek design
- One piece, self fabric 'V' neck collar
- Quick drying 100% Polyester interlock jersey 160g



ST30 TROUSERS 7037

6 • 8 • 10 • 12 • 14 • 16 • 18

- + 100% Two-way stretch Polyester fabric
- + Ladies cut
- + Fully elasticated waist
- + Two side pockets
- + Unfinished leg



ANYA SHRUBSOLE
ENGLAND

GM PERFORMANCE TRAINING WEAR

- + ATHLETIC DESIGN
- + LIGHTWEIGHT
- + CLUB/SCHOOL, CUSTOM PERSONALISATION AVAILABLE
- PLEASE CONTACT CUSTOMER SERVICE



HOODY 7260
SMALL JNR • MEDIUM JNR
• LARGE JNR • S • M • L • XL
• XXL • XXXL [Navy, Green, Maroon]

WOMENS 6 • 8 • 10 • 12
• 14 • 16 • 18 [Navy only]

- + 100% Polyester interlock jersey bonded with 100% Polyester anti-pill fleece 300g
- + Drawstring hood

TRAINING SHIRT 7266
SMALL JNR • MEDIUM JNR
• LARGE JNR • S • M • L • XL
• XXL • XXXL [Navy, Green, Maroon]

WOMENS 6 • 8 • 10 • 12
• 14 • 16 • 18 [Navy only]

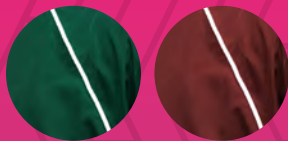
- + 100% Polyester Alfa knit 160g



TRAINING SHORT 7268
SMALL JNR • MEDIUM JNR
• LARGE JNR • S • M • L • XL
• XXL • XXXL [Navy, Green, Maroon]

WOMENS 6 • 8 • 10 • 12
• 14 • 16 • 18 [Navy only]

- + 100% Polyester Fuma knit 170g
- + Elasticated and drawstring waist



TRAINING JACKET 7262
SMALL JNR • MEDIUM JNR
• LARGE JNR • S • M • L
• XL • XXL • XXXL
[Navy, Green, Maroon]

WOMENS 6 • 8 • 10 • 12
• 14 • 16 • 18 [Navy only]

- + 100% Polyester Woven Dobby with mesh lining
- + 2 pockets



TRAINING TROUSER 7264
SMALL JNR • MEDIUM JNR
• LARGE JNR • S • M • L • XL
• XXL • XXXL
[Navy, Green, Maroon]

WOMENS 6 • 8 • 10 • 12
• 14 • 16 • 18 [Navy only]

- + 100% Polyester Woven Dobby with mesh lining
- + Elasticated and drawstring waist
- + 2 zipped pockets



TEKNIK™ BASE LAYER

LONG SLEEVE SHIRT 7280
SMALL JNR • MEDIUM JNR
• LARGE JNR • S • M • L
• XL • XXL

SHORT SLEEVE SHIRT 7281
SMALL JNR • MEDIUM JNR
• LARGE JNR • S • M • L
• XL • XXL

- + Compression Fit & Support
- + 94% Polyester, 6% Spandex Fabric Composition
- + Smooth Flat Seam Construction
- + Performance Panelling

SHORT 7282
SMALL JNR • MEDIUM JNR
• LARGE JNR • S • M • L • XL • XXL

- + Compression Fit & Support
- + 94% Polyester, 6% Spandex Fabric Composition
- + Smooth Flat Seam Construction
- + Pouch For Abdominal Guard





PERFORMANCE TRAINING WEAR

- + ATHLETIC DESIGN
- + LIGHTWEIGHT



POLO SHIRT 7265

SMALL JNR • MEDIUM JNR • LARGE JNR
• S • M • L • XL • XXL • XXXL
(Navy, Green, Maroon, White)

WOMENS 6 • 8 • 10 • 12 • 14 • 16 • 18
(Navy only)

- + 100% Cotton Pique knit 220g



LEISURE JACKET 7261

SMALL JNR • MEDIUM JNR • LARGE JNR
• S • M • L • XL • XXL • XXXL
(Navy, Green, Maroon)

WOMENS 6 • 8 • 10 • 12 • 14 • 16 • 18
(Navy only)

- + 100% Polyester interlock jersey bonded with 100% Polyester anti-pill fleece 300g
- + Toggle pull waist



GILET 7263

SMALL JNR • MEDIUM JNR • LARGE JNR
• S • M • L • XL • XXL • XXXL
(Navy, Green, Maroon)

WOMENS 6 • 8 • 10 • 12 • 14 • 16 • 18
(Navy only)

- + 100% Polyester interlock jersey bonded with 100% Polyester anti-pill fleece 300g
- + Elasticated waist

FLOPPY HAT 7060

S • M • L • XL

- + 100% white cotton
- + Fully lined



PANAMA HAT 7061

S • M • L • XL

- + Available in Maroon, White, Navy, Green
- + 100% cotton
- + Reinforced wide brim
- + Fully lined



TEKNIK™ CALF SLEEVE 7283

SMALL • MEDIUM • LARGE

- + Compression fit
- + Graduated compression for active muscle recovery and support
- + Smooth flatlock seam construction

CRICKET CAP 7062

ONE SIZE FITS ALL

- + Navy, Green, Maroon
- + Brushed twill
- + Pre-shaped two-tone peak
- + Easi-fit velcro fastener



TEKNIK™ PLUS SOCKS 7157

ONE SIZE 6-13

One size fits all – this is a technical sock which shrinks in the wash but stretches back to its original size. The GM Teknik Plus sock combines Merino Wool and polypropylene to help wick away moisture, keeping the feet dry and blister free. The loop pile construction provides fully cushioned comfort. The double padded sole, incorporating Cordura in the heel and toe, ensure durability and protection and with a specially designed relaxed top, ventilation channels and a flat link toe seam. Teknik Plus - the ultimate cricket sock!



TEKNIK™ SOCKS 7155

ONE SIZE 6-13

With Coolmax®
Perfect mix of fabrics gives

- + Comfort
- + Performance
- + Durability

Coolmax® and Dupont® are trade marks of Dupont de Nemours (France) SA



PREMIER SOCKS 7055

- + Cream SIZES 6-13
- + Grey SIZES 1-5 & 6-13
- + Sports fabric mix

GM KNITWEAR & FLEECES



TRIMMED LONG SLEEVE SWEATER 7042
SMALL JNR • MEDIUM JNR • LARGE JNR • S • M • L • XL • XXL

TRIMMED SLEEVELESS SLIPOVER 7043
SMALL JNR • MEDIUM JNR • LARGE JNR • S • M • L • XL • XXL

- Colours available:
- + Green/Gold/Green,
 - + Navy/Sky/Navy,
 - + Navy/Red/Navy,
 - + Maroon/Amber/Maroon



PREMIER KNITWEAR 100% Acrylic, classic heavy cable knit, generously sized, extra long with deep ribbed welt, available plain and with trim colours



PLAIN LONG SLEEVE SWEATER 7040
XTRA SMALL JNR
• SMALL JNR • MEDIUM JNR
• LARGE JNR • S • M • L • XL
• XXL • XXXL



PLAIN SLEEVELESS SLIPOVER 7041
XTRA SMALL JNR
• SMALL JNR • MEDIUM JNR
• LARGE JNR • S • M • L • XL
• XXL • XXXL



PLAIN SLEEVELESS TEKNIK SLIPOVER 7047
SMALL JNR • MEDIUM JNR • LARGE JNR
• S • M • L • XL • XXL

- + Modern design for the modern cricketer/club
- + Polyester/Fleece combination giving fantastic feel, warmth and comfort
- + Shell Fabric 280g with Fleece lining 175g

TRIMMED SLEEVELESS TEKNIK SLIPOVER 7049

- + Sizes and spec as above. Colours available:
- + Green/Gold/Green, Navy/Sky/Navy, Navy/Red/Navy, Maroon/Amber/Maroon



PLAIN LONG SLEEVE TEKNIK SWEATER 7046
SMALL JNR • MEDIUM JNR • LARGE JNR
• S • M • L • XL • XXL

- + Modern design for the modern cricketer/club
- + Polyester/Fleece combination giving fantastic feel, warmth and comfort
- + Shell Fabric 280g with Fleece lining 175g

TRIMMED LONG SLEEVE TEKNIK SWEATER 7048

- + Sizes and spec as above. Colours available:
- + Green/Gold/Green, Navy/Sky/Navy, Navy/Red/Navy, Maroon/Amber/Maroon



RUBBER GRIPS

HEX 4163
FULL SIZE (DOZENS)

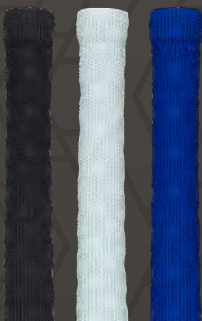
NEW

- + Eclipse Black, Icon White, Siren Blue

HEX 4162
FULL SIZE (SINGLES
WITH HEADERCARD)

NEW

- + Eclipse Black, Icon White, Siren Blue



OUTSTANDING
GRIP & FEEL

RIPPLE™ 4136
FULL SIZE (SINGLES WITH
HEADERCARD)

- + White with Red, Blue, Black

RIPPLE™ 4138
FULL SIZE (DOZENS)

- + White with Red, Blue, Black

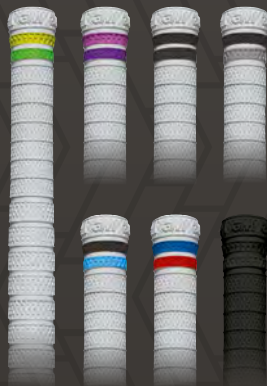


PATRIOT 4131
LORD'S TAVERNERS (DOZENS)



TERRAIN 4141
FULL SIZE (DOZENS)

- + White with Yellow / Green, Pink / Purple, Black / Black, Black / Silver, Black / Ice Blue, Blue / Red
- + Black



TERRAIN 4142
FULL SIZE (SINGLES
WITH HEADERCARD)

- + White with Yellow / Green, Pink / Purple, Black / Black, Black / Silver, Black / Ice Blue, Blue / Red
- + Black



CONTROL™ 4124
FULL SIZE (DOZENS)

- + Octane Blue, Yellow, Red, White, Black, Epic Orange, Argon Green



MATRIX™ 4125
FULL SIZE (DOZENS)

- + Super soft rubber with outstanding grip
- + Epic Orange, Pink, Red, Green, Yellow, White



MATRIX™ 4127
FULL SIZE (SINGLES WITH
HEADERCARD)

- + Epic Orange, Pink, Red, Green, Yellow, White

BATTING TEE
4052

- + Set of 6



SEQUENCE SPACERS
4039

- + Set of 50 with carry handle for easy storage



12" CONES
4037

- + Set of 12 Cones in assorted colours



FIELDING DISCS
4033

- + Set of 30 Fielding Discs



NEW

BOUNDARY FLAGS
4036

- + Set of 30 Boundary Flags
- + Carry bag



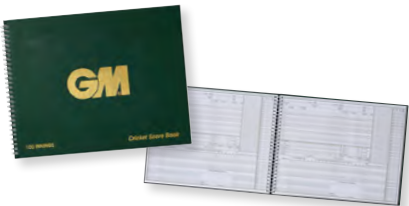
BOWLERS MARKERS
4038

Pair of bowlers markers



SCOREBOOKS 4040
100 INNINGS

- + Comprehensive analysis including end of season statistics



SCOREBOOKS 4041
60 INNINGS

Comprehensive analysis including end of season statistics





LEATHER CRICKET BALLS

All GM leather balls conform to Law 4 of the MCC Laws of Cricket 2017 Code and are hand made to our exacting specifications under close supervision in specialist factories

Strict quality control of materials and construction provides superior shape retention, true seams and avoidance of 'hard' balls

DIAMOND® GRADE 1 COUNTY

3000 MENS

- + Finest quality English Leather, alum tanned, hand stitched, wax finished
- + Newly developed, select, specially formulated pre-shaped cork/rubber centre
- + Four piece ball
- + Seam stitches 78/80
- + Available in Red, White and Pink



MAESTRO® GRADE 1 COUNTY

3001 MENS • 3002 WOMENS
3003 JUNIOR

- + Select butt leather, alum tanned, hand stitched, wax finished
- + Newly developed, specially formulated pre-shaped cork/rubber centre
- + Four piece ball
- + Seam stitches 78/80
- + Available in Red, White and Pink



ICON® GRADE 1 LEAGUE

3004 MENS • 3005 JUNIOR

- + Select butt leather, alum tanned, hand stitched, wax finished
- + Newly developed, specially formulated pre-shaped cork/rubber centre
- + Four piece ball
- + Seam stitches 72/75
- + Available in Red only



CHROME™ GRADE 1 CLUB

3006 MENS • 3007 WOMENS
3008 JUNIOR

- + Butt leather, alum tanned, hand stitched, wax finished
- + Newly developed, specially formulated pre-shaped cork/rubber centre
- + Four piece ball
- + Seam stitches 68/70
- + Available in Red, White and Pink



CLUBMAN™ GRADE 1 CLUB

3021 MENS • 3022 JUNIOR

- + Butt leather, alum tanned, hand stitched, wax finished
- + Newly developed, specially formulated pre-shaped cork/rubber centre
- + Four piece ball
- + Seam stitches 68/70
- + Available in Red only



CATALYST® GRADE 2

3024 MENS • 3025 JUNIOR

- + Select leather, vegetable tanned, hand stitched, wax finished
- + Pre-shaped solid cork centre with pure new wool and natural cork layers
- + Two piece ball
- + Seam stitches 58/60
- + Available in Red only



BALLS SPECIFICATIONS

Law 4 - The ball (Laws of Cricket 2017 Code)

	WEIGHT		CIRCUMFERENCE	
	OUNCES	GRAMS	INCHES	CENTIMETRES
MENS	5.5oz to 5.75oz	155.9g to 163g	8.81in to 9in	22.4cm to 22.9cm
WOMENS	4.94oz to 5.31oz	140g to 151g	8.25in to 8.88in	21cm to 22.5cm
JUNIOR	4.69oz to 5.06oz	133g to 144g	8.06in to 8.69in	20.5cm to 22 cm

DAN LAWRENCE
ENGLAND



TRAINING BALLS



SKILLS BALL 3040

SENIOR · JUNIOR

- + Red, White, Red/White or Pink
- + Weight and bounce as per a leather cricket ball but without the hardness
- + PVC outer with specially formulated core
- + Durable stitched seam
- + Ideal for developing technique and confidence



TRUBOUNCE™ BALL 3070

- + Soft Ball, ideal for use in training or fun
- + Bounce like a leather cricket ball

NEW

REACTION BALL 3052

- + Ideal for training and fun
- + Designed to improve reactions and hand-eye coordination



ALL-WEATHER BALL 3045

SENIOR 110G
JUNIOR 70G

- + Durable rubber ball for use in all conditions



FIRST BALL 3042 JUNIOR

- + Similar construction to a tennis ball but with a cricket seam and lower bounce
- + Excellent first ball for primary school children



BOWLING MACHINE BALL

SENIOR

- + Hard wearing
- + Moulded PVC 5oz ball
- 3090 Box of 6 (Red or Yellow)
- 3095 Bucket of 24 (Red only)



CHEVRON SWING BALL 3051

SENIOR

- + Achieve swing like the professionals
- + Ideal training aid for both bowlers and batsmen. Have fun!



SKILLS BALL BUCKET 3140

24 SKILLS BALLS
PER BUCKET

- + Available: Red/White Senior or Red/White Junior – no mixed buckets

BOWLING DEVELOPMENT PROGRAMME 3080

3 BALL PACK

Step 1 – First Ball –

Low bounce tennis ball with a cricket seam. Excellent 'first ball' for children starting the game of cricket

Step 2 – Skills Ball –

Weight and bounce as per a leather cricket ball but without the hardness. Durable stitched seam. Ideal for developing technique and confidence

Step 3 – Crown Match Ball –

4¾oz leather cricket ball. Experience the real feel of a match ball



SWINGING® 3068

THE REVOLUTIONARY SWINGING BALL

- + Available in Red/Yellow, Red/White, Red/Red, White/White, Orange/Black, Pink/Pink
- + Achieve swing like the professionals
- + Developed specifically for recreational sport, great fun
- + Ideal training aid + Durable and tough



ACCESSORIES / STUMPS & BAILS



BAT REPAIR KIT 4054

Contains:

- + Bat Oil
- + Batcare Cloth
- + Sand Paper
- + Tube of Glue
- + Two Toe Guards



BAT TAPE 4065

25mm x 10M
+ One Roll on header card



BAT OIL 4063

100ml

RUBBER GRIP APPLICATOR 4059

- + Ideal for fast easy fitting of rubber grips to handle

BAT MALLET 4055

- + For "knocking in" bats
- + Durable, two seamless heads

GRIP APPLICATOR 4057

- + The easy way to change your grip on the cricket bat
- + Works using a vacuum to stretch the grip and then easily fits over the bat handle

UMPIRES COUNTER 4151

- + Keep track of the numbers of balls bowled per over and the total overs up to 99 – fits comfortably in your pocket

NEW NEW



NEW

CLUB STUMP SET

4145 MENS
4147 JUNIOR

- + Great value club stumps with carry bag



P.O.S. BALLS BUCKET 4034

- + 60 ball capacity (balls not included)
- + Padded lid

BAT GAUGE 4042

- + Precision moulded bat gauge
- + Sizing parameters conform strictly to new MCC Law 5 bat size regulations
- + For umpire use to uphold the balance of play between bat and ball



MENS STUMPS

- + Size out of ground – 28" as recommended by ECB for Mens cricket
- + All stumps are supplied in sets of six, complete with four bails

TEST 4011 MENS

- + Made in the UK
- + Finest quality straight grained Ash, wax finished

COUNTY 4014 MENS

- + Made in the UK
- + High quality Beech, wax finished



JUNIOR STUMPS

- + Size out of ground – 27" as recommended by ECB for Junior cricket
- + All stumps are supplied in sets of six, complete with four bails

COUNTY 4015 JUNIOR

ANTI SCUFF ROLL 4072

- + 130mm x 50M



PLAYGROUND STUMPS 4019

- + 3 stumps loaded on wooden block
- + Size out of ground – 28"
- + Suitable for all age groups
- + Presentation boxed



SPRINGBAK™ STUMPS 4018

- + 3 stumps loaded on solid cast iron base
- + Ideal for heavy duty use
- + Size out of ground – 28"
- + Suitable for all age groups



MULTI SURFACE STUMP SET 4013

- + Three removable moulded stumps with bails on heavy duty rubber base
- + Size out of ground – 28"
- + Suitable for all age groups



NEW BAILS 4143 MENS 9"

- + 4 Bails per set



NEW BAILS 4144 YOUTHS 8"

- + 4 Bails per set



WHEELIE BIN WICKETS 4024

- + Pack of 20 self adhesive wickets



NEW

MINIATURE BATS 4003

17" ECLIPSE®
17" SIREN™
17" DIAMOND®
17" ZELOS™

- + Ideal for souvenirs or to collect autographs



NEW

SPRINGBAK™ TARGET STUMP 4026

HALF TARGET STUMP 4051

- + Target stump on steel spring, ideal for fielding drills

MULTI SURFACE SINGLE STUMP 4031

- + Single removable moulded stump on rubber base





SELL MOORE! IN-STORE GM SALES AIDS



GM® HELMET STAND 9610 A157 THE VERSATILE IN-STORE DISPLAY SYSTEM

- + Displays cricket helmets neatly and securely

9610 A153 GM Branded Slatwall Display Arm with 5 Hooks

9610 A152 Lower Slatwall Bat Display Arms (x5)

- + With attachment for cards to explain key features of the bat model displayed

GM® Bat Display Cards

- 9610 A181 Zelos L555
- 9610 A182 Diamond L540
- 9610 A184 Noir L555
- 9610 A187 Siren L540
- 9610 A188 Icon L555
- 9610 A189 Eclipse L540

- + Full set of bat display cards supplied F.O.C. with purchase of bat display base, locators and lower Slatwall bat display arms

9610 A154 Bat Display Locators (Set of 5)

- + Accommodates 20 bats

9610 A151 "Astroturf" Bat Display Base + 990mm Wide x 550mm Deep



GM® DISPLAY STAND 9610 THE VERSATILE IN-STORE DISPLAY SYSTEM

- + Displays cricket bats neatly and securely
- + Flexible system can display softs and accessories in one neat area

**SIZING CHART**
MADE BY England's Best

FULL SIZE 1.75m & over 5ft 9in & over	
ACADEMY® 1.68 - 1.75m 5ft 6in - 5ft 9in	
HARROW 1.63 - 1.68m 5ft 4in - 5ft 6in	
6 1.57 - 1.63m 5ft 2in - 5ft 4in	
5 1.50 - 1.57m 4ft 11in - 5ft 2in	
4 1.44 - 1.50m 4ft 9in - 4ft 11in	
3 1.37 - 1.44m 4ft 6in - 4ft 9in	
2 1.29 - 1.37m 4ft 3in - 4ft 6in	
1 1.20 - 1.29m 3ft 11in - 4ft 3in	
0 Up to 1.20m Up to 3ft 11in	

RECOMMENDED BAT SIZES
BATTING GLOVES
HEIGHT FROM WRIST TO TOP OF MIDDLE FINGER

Hand	Small	Medium	Large	Extra Large
Male	180mm	190mm	200mm	210mm
Female	170mm	180mm	190mm	200mm



BATTING PADS
HEIGHT FROM TOP OF INSTEP TO MIDDLE KNEE

Hand	Small	Medium	Large	Extra Large
Male	180mm	190mm	200mm	210mm
Female	170mm	180mm	190mm	200mm

**Check out our GM bat factory tour videos!**



GM® SIZING CHART 9810 FOR IN-STORE OR HOME USE

- + Hang flat to wall
- + Player stands against chart to determine their bat size
- + Includes batting glove size guide
- + Includes batting pad size guide
- + Approx. 78" x 12"

GUNN & MOORE RECOMMENDED BAT SIZES

Height of Junior Player	Recommended bat size
Up to 120cm (3'11")	0
120-129cm (3'11" - 4'3")	1
129-137cm (4'3" - 4'6")	2
137-144cm (4'6" - 4'8")	3
144-150cm (4'8" - 4'11")	4
150-157cm (4'11" - 5'2")	5
157-163cm (5'2" - 5'4")	6
163-168cm (5'4" - 5'6")	Harrow
168-175cm (5'6" - 5'9")	Academy
175cm and over (5'9" +)	Full Size

GM BAT INFO

ENGLISH
WILLOW BATS

TRAINING BATS

KASHMIR BATS

YOUNG GUNN

BATTING PADS

BATTING GLOVES

WICKET KEEPING

PROTECTION

HELMETS

BAGS

FOOTWEAR

TROUSERS
& SHIRTS

PERFORMANCE
TRAINING
WEAR

KNITWEAR
& FLEECEs

RUBBER GRIPS

CRICKET BALLS

ACCESSORIES

GM IN-STORE

PLAYER
EDITION BATS

BS55 RANGE



PLAYERS EDITION BATS



GM's DXM technology allows us to offer precise replicas of leading GM Players' Bats. The label of the bat will be as the Player will use during the current season. Our unique Computer Aided Manufacture produces bats to the precise player profile and dimensions. Now, keen cricketers around the World can use the precise shapes used by GM's top international stars.

PLAYERS EDITION bats are made from very select LE timber and are finished with prestige PLAYERS EDITION identification and superb laser engraved player autographs. GM NOW! and ToeTek™ finish fitted as standard. PLAYERS EDITION bat weights cannot be specified and will be "as finished".

Please visit www.gm-cricket.com for each Player's individual specification.



GM BAT INFO

ENGLISH
WILLOW BATS

TRAINING BATS

KASHMIR BATS

YOUNG GUNN

BATTING PADS

BATTING GLOVES

WICKET KEEPING

PROTECTION

HELMETS

BAGS

FOOTWEAR

TROUSERS
& SHIRTS

PERFORMANCE
TRAINING
WEAR

KNITWEAR
& FLEECEs

RUBBER GRIPS

CRICKET BALLS

ACCESSORIES

GM IN-STORE

PLAYER
EDITION BATS

BS55 RANGE

DIAMOND® L540 ENGLISH WILLOW CRICKET BATS

Full range details on Page 6

A RANGE OF PRODUCTS DEVELOPED
IN CONJUNCTION WITH
BS55
AND ENDORSED BY
ENGLAND ALLROUNDER BEN STOKES



DIAMOND® ORIGINAL, DIAMOND® 808 & DIAMOND® BATTING PADS & GLOVES

Full details on Pages 16-21
and Pages 22-26

DIAMOND® 101 KASHMIR WILLOW CRICKET BAT

Full details on Page 13

DIAMOND® CRICKET SET

Full details on
Page 14

DIAMOND® MINI CRICKET SET

Full details on
Page 15

GM BAT INFO

ENGLISH
WILLOW BATS

TRAINING BATS

KASHMIR BATS

YOUNG GUNN

BATTING PADS

BATTING GLOVES

WICKET KEEPING

PROTECTION

HELMETS

BAGS

FOOTWEAR

TROUSERS
& SHIRTS

PERFORMANCE
TRAINING
WEAR

KNITWEAR
& FLEECEs

RUBBER GRIPS

CRICKET BALLS

ACCESSORIES

GM IN-STORE

PLAYER
EDITION BATS

BS55 RANGE

THE GM PICK-UP INDEX

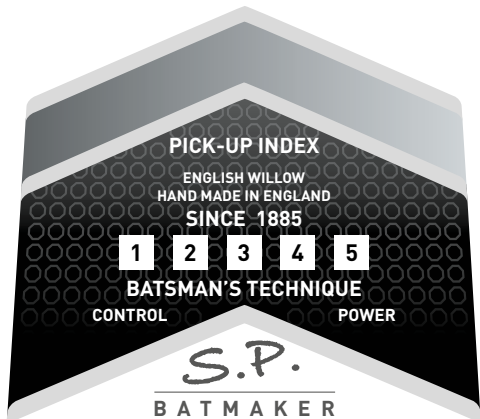
Gunn & Moore English Willow bats are expertly crafted to produce the best balance available from a particular cleft of timber.

Most cricketers appreciate that whilst the absolute weight of a bat is of interest, it is the 'feel' or 'pick-up' of the bat when playing strokes that is more revealing of its character and more useful to tune the bat to the player's technique.

A bat with a 'light' pick-up may well suit a 'touch' batsman more accustomed to guiding or controlling the ball accurately in precise directions, whilst a 'heavier' pick-up bat will be appreciated by batsmen more used to the power game.

Gunn & Moore introduce the GM Pick-Up Index, an assessment made at the factory by the batmaker of the bat's relative pick-up. This is a subjective view as to the type of batsman who may derive maximum performance from the bat, rather like a wine expert recommending a particular vintage to suit an individual's taste.

The Pick-Up Index will prove useful in helping batsmen select a particular Gunn & Moore bat to further develop and exploit their technique to very best advantage.



The Gunn & Moore Pick-Up Index is clearly displayed on all Five Star English Willow bats.

The top quality equipment, clothing and footwear described in this brochure has been designed and tested by Gunn & Moore experts and built by craftsmen using the finest selected materials to the exacting standards of craftsmanship for which Gunn & Moore products have been world famous since 1885.

Gunn & Moore reserves the right to make any alterations to the design, material or arrangement of these products which in their view will improve them. We claim intellectual property rights in our products and their trade dress as appropriate, including patents, design registrations, trade marks and copyright. Rigorous action will be taken against all infringers to maintain those rights to protect dealers and users from imitation. The entire contents of this publication are the copyright of Gunn & Moore and may not be reprinted, copied or otherwise duplicated without written consent of the copyright owners.

Gunn & Moore

Telephone: 0115 985 3500

Fax: 0115 985 3501

Email: assist@playwiththebest.com

Web: www.gm-cricket.com



www.facebook.com/gmcricket



@GMCricket



@GMCricket



Gunn & Moore Cricket

All returned goods must be sent to
GM Operations Centre,
Trent Lane, Colwick,
Nottingham NG2 4DS



©2019 Unicorn
Products Limited

Catalogue designed by
Chris Wall Creative



36 19 2500 #85070

WHICH GUNN & MOORE BAT?

Selecting a cricket bat is a very personal decision. There are no right or wrong bats, the bat to choose is the one that feels most comfortable for you. We recommend that you always feel the bat before you buy it and that you pick up several bats before making your final choice. Make sure you ask where your bat is made and by whom. All GM DXM English willow bats are made by our own craftsmen in our own factory in Nottingham, England. GM 5 Star dealers carry a wide range of GM bats and will give sound advice. The Gunn & Moore range of bats is designed to suit every technique and budget.

We offer six blade shapes designed using our world leading DXM process:

**DIAMOND® L540, SIREN™ L540,
ZELOS™ L555, NOIR™ L555,
ICON® L555 & ECLIPSE® L540.**

Each shape has different profile characteristics which are explained in detail on pages 6-11.

We offer English willow bats in nine qualities:

**ORIGINAL L.E., ORIGINAL, SIGNATURE L.E.,
909, 808, 707/SIGNATURE, 606, 404 & 303.**

Each quality is developed around different grades of willow which are explained in detail on page 5.



MADE BY

England's Best

THE BEN STOKES MIRACLE OF HEADINGLEY - 135 NOT OUT - AUGUST 25TH 2019 - 3RD ASHES TEST

What a day, what an innings! Ben Stokes' unbeaten 135 won England a thrilling one-wicket victory to level the series. This was an innings that earned plaudits from some of the biggest names in cricket...

Former England batsman Geoffrey Boycott on Twitter:

"I've seen some remarkable cricket moments in my life but that is the best I've seen in over 50 years.

@benstokes38 saved the Ashes and gave a magical inspirational innings. Even better than his World Cup performance."

Former England captain Michael Atherton:

"On this ground, great English innings in recent years, you're thinking Botham in 1981, (Graham) Gooch in 1991, (Mark) Butcher 2001 and Ben Stokes has to top all those. Australia, Ashes at stake, this has reignited the Ashes after England were dead and buried."

Former Australia captain Ricky Ponting:

"I'm not sure I've seen anything better than that on a Test ground, to be honest."

Former Australia bowler Glenn McGrath on BBC's Test Match Special:

"What a class cricketer Ben Stokes is. Amazing with bat, ball and in the field. Is there a better all-rounder in the world right now?"

Former England captain Michael Vaughan on Twitter:

"What a privilege to witness the Greatest Test innings I have seen @benstokes38."

GM PowerGlide®
PlayWithTheBest
unicorn molten NETI
CHECK STOCK & ORDER AT WWW.PlayWithTheBest.COM

**SPORTING
GOODS
BUSINESS
AWARDS 2016
WINNER**



**BEST
CRICKET
BRAND**